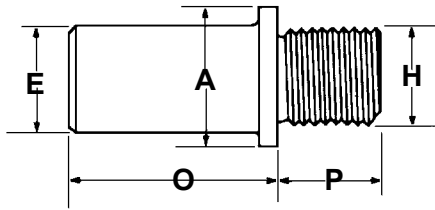
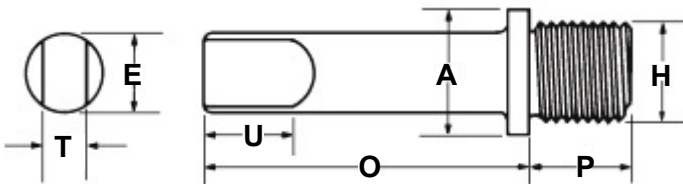


Straight Shanks



STRAIGHT SHANKS Steel

"H" THREAD SIZE	"E" SHANK DIA	"P" THREAD LENGTH	"O" SHANK LENGTH	"A" SHOULDER DIA	PART#
1/4"-28	1/4"	1/4"	1-3/4"	3/8"	4
1/4"-28	3/8"	1/4"	1-3/4"	3/8"	E-2
1/4"-28	1/2"	1/4"	1-3/4"	1/2"	G-2
5/16"-24	1/4"	5/16"	1-3/4"	7/16"	14
5/16"-24	3/8"	5/16"	1-3/4"	7/16"	E-12
5/16"-24	1/2"	5/16"	1-3/4"	1/2"	G-12
3/8"-24	1/4"	3/8"	1-3/4"	1/2"	24
3/8"-24	3/8"	3/8"	1-3/4"	1/2"	E-22
3/8"-24	1/2"	3/8"	1-3/4"	1/2"	G-22
3/8"-24	5/8"	3/8"	1-3/4"	5/8"	I-22
1/2"-20	3/8"	1/2"	1-3/4"	5/8"	E-32
1/2"-20	1/2"	1/2"	1-3/4"	5/8"	G-32
1/2"-20	5/8"	1/2"	1-3/4"	5/8"	I-32
1/2"-20	3/4"	1/2"	1-3/4"	3/4"	J-33
1/2"-20	1"	1/2"	2"	1"	L-33
5/8"-18	3/8"	5/8"	1-3/4"	3/4"	E-42
5/8"-18	1/2"	5/8"	1-3/4"	3/4"	G-42
5/8"-18	5/8"	5/8"	1-3/4"	3/4"	I-42
5/8"-18	3/4"	5/8"	1-3/4"	7/8"	J-43
5/8"-18	1"	5/8"	2"	1"	L-43
3/4"-16	1/2"	5/8"	1-3/4"	7/8"	G-54
3/4"-16	5/8"	5/8"	1-3/4"	7/8"	I-52
3/4"-16	3/4"	5/8"	1-3/4"	7/8"	J-53
3/4"-16	1"	5/8"	2"	1"	L-53
1"-14	1"	3/4"	2"	1-3/16"	L-63
1-1/4"-12	1"	3/4"	2"	1-1/2"	L-73



Straight Shanks with Tang

STRAIGHT SHANKS WITH TANG Steel

"H" THREAD SIZE	"E" SHANK DIA	"P" THREAD LENGTH	"O" SHANK LENGTH	"A" SHOULDER DIA	"U" TANG LENGTH	"T" TANG THICKNESS	PART#
1/4"-28	1/4"	1/4"	1-3/4"	3/8"	5/16"	.122	TX-4
1/4"-28	13/32"	1/4"	1-3/4"	13/32"	7/16"	.242	TZ-3
5/16"-24	1/4"	5/16"	1-3/4"	7/16"	5/16"	.122	TX-14
5/16"-24	13/32"	5/16"	1-3/4"	7/16"	7/16"	.242	TZ-13
3/8"-24	1/4"	3/8"	1-3/4"	1/2"	5/16"	.122	TX-24
3/8"-24	13/32"	3/8"	1-3/4"	1/2"	7/16"	.242	TZ-23
1/2"-20	13/32"	1/2"	1-3/4"	5/8"	7/16"	.242	TZ-33
1/2"-20	9/16"	1/2"	1-3/4"	5/8"	1/2"	.303	TH-33
5/8"-18	13/32"	5/8"	1-3/4"	7/8"	7/16"	.242	TZ-43
5/8"-18	9/16"	5/8"	1-3/4"	3/4"	1/2"	.303	TH-43
3/4"-16	9/16"	5/8"	1-3/4"	7/8"	1/2"	.303	TH-53