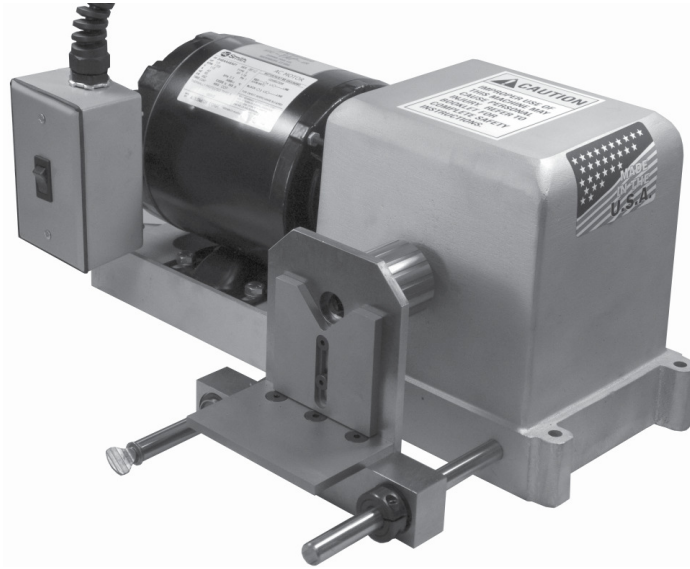


STC-TAP-ER TAPPING MACHINE

TAPS UP TO 5/16-18 THREAD IN 1/2" STEEL!!

HEAVY DUTY TAPERED CONE DRIVE

5/64" to 1/2" capacity chuck
 1/3 H.P., 115V, Single Phase
 1725 RPM, A48 Frame Motor
 Shipping weight: 43 lbs



The STC-TAP-ER has a double disc friction drive that reverses rotation instantly by the application of forward or backward hand pressure on the part being tapped. The friction discs are driven by a Heavy Duty Tapered Cone Drive Collar mounted on the motor shaft. The maximum spindle speed is 300 RPM.

ORDERING NO.	CONFIGURATION
STC-TAP-ER	STANDARD AS SHOWN
STC-TAP-ER(-)	MINUS THE FRONT STAGING
STC-TAP-ER/MAGNETIC	WITH MAGNETIC START
STC-TAP-ER-3/4CAP	WITH 3/4" CAPACITY CHUCK
STC-TAP-ER KEYLESS	WITH KEYLESS CHUCK
STC-TAP-ER-380/3	WITH 380V 50HZ 3 PHASE MOTOR
STC-TAP-ER-VAR/RPM	WITH VARIABLE SPINDLE SPEED CONTROL AND FORWARD-REVERSE SWITCH

FEATURES:

- Push to tap in
- Pull to tap out
- Sliding face plate
- Work table can be reversed when not needed
- Easy to set stop for tap depth control
- Comfortable bench height working area
- Long lasting tapered cone drive
- Pilot light switch warns if motor is left running

ALSO AVAILABLE 220V, 50HZ OR 60HZ, SINGLE OR SPLIT PHASE MOTORS OR AVAILABLE WITHOUT MOTOR
 CALL FOR A QUOTATION ON YOUR SPECIFIC CONFIGURATION

REPLACEMENT PART

CAT. NO.	DESCRIPTION
BB-TAP-6	TAPPERED CONE DRIVE

WARNING!! TO AVOID INJURIES, WORKPIECE SHOULD BE HELD IN AN APPROPRIATE CLAMPING DEVICE WHILE BEING TAPPED AND SHOULD NEVER BE HELD BY HAND WITHOUT ADEQUATE PROTECTION.