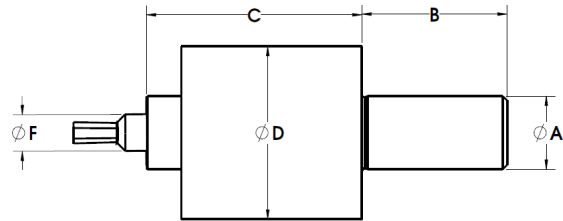


CNC LATHE, ADJUSTMENT FREE, INTERNAL BROACH TOOL HOLDER

Introducing a wobble broach tool that can be quickly setup for use in CNC lathes.
(Not for use on milling machines)

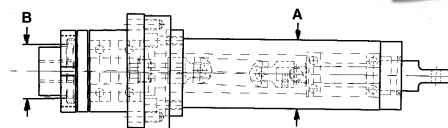


- No center indicating required
- Hex and square broaches in stock for these holders starting on page 12.
- Requires X-Axis machine adjustment only for broach lengths other than the standard designated lengths of 1.250" OAL for ORB00 holders and 1.750" OAL for ORB2 holders.

Catalog Number	A	B	C	D	F	Broach Series #
ORB00-CT/0.625	5/8"	1-1/2"	1-7/8"	1-1/2"	8MM	--00
ORB00-CT/0.750	3/4"					
ORB2-CT/0.750	3/4"	2"	2-15/16"	2-3/8"	1/2"	--2
ORB2-CT/1.000	1"					
ORB2-CT/1.250	1-1/4"					
ORB2-CT/1.500	1-1/2"					

DRIVEN ROTATING BROACH HOLDERS FOR MULTIPLE SPINDLE AND CNC MACHINES

- Rotated by machine drive shaft
- Mounts in endworking tool holder block
- Rotates broach at same RPM as workpiece
- Eliminates spiralling
- Eliminates skidding action at start of cut
- Produces accurate straight broached forms
- Available for external and internal cutting
- Spline drive shafts available
- Can remove shank to center it off the machine.



CAT. NO.	INTERNAL BROACHING	
	"A"	BROACH SHANK DIA.
DB-1.50-ORB2	1.500	.500
DB-2.00-ORB2	2.000	.500
DB-2.25-ORB2	2.250	.500
DB-50MM-ORB2	50MM	.500

CAT. NO.	EXTERNAL BROACHING	
	"A"	"B"
DB-1.50-ORB2	1.500	1.575
DB-2.00-ORB2	2.000	1.575
DB-2.25-ORB2	2.250	1.575
DB-50MM-ORB2	50MM	1.575

Standard from stock
HSS broaches
shown on pages 12 - 14.
Broach gages available 16.

ALL BROACH HEAD DIMENSIONS SAME AS ORB2/... AND ORBX2/... AS SHOWN ON PAGES 10 & 18.