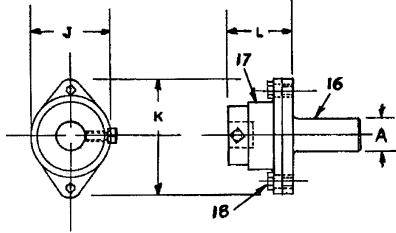


ADJUSTABLE (FLOATING) RELEASING TAP HOLDERS

Now the exclusive principal of the Somma clutch type Releasing Tap Holder is available in the adjustable (floating) type. This tool has all the advantages of the Somma Releasing Tap Holder and can also be used on screw machines and turret lathes that are out of alignment.



CAT. NO.	A	J	K	L	TAP CAPACITY	
					HAND	PIPE
ARTH00	5/8	1-3/8	2-1/8	1-11/32	7/16	1/8
ARTH1	3/4	1-19/32	2-3/4	1-11/16	11/16	1/4
ARTH2	1"	2-7/32	3-1/2	2-3/8	1-1/8	3/4

All other dimensions and parts are the same as Releasing Tap Holder (Pg. 111).

ADJUSTABLE RELEASING TAP HOLDER PARTS

Part No.	ARTH00 Cat. No.	ARTH1 Cat. No.	ARTH2 Cat. No.
16. Shank	ARTH00-16	ARTH1-16	ARTH2-16
17. Head	ARTH00-17	ARTH1-17	ARTH2-17
18. Clamp Screw & Washer	ARTH00-18	ARTH1-18	FDH1-4

SEE BELOW FOR TAP HOLDER BUSHINGS FOR THESE TAP HOLDERS.

TAP HOLDER BUSHINGS

SIZE OF TAP USED**	TAP SHANK DIA.	#00	#0	#2
		1/2 OD x 3/4 long CAT. NO.	5/8 OD x 7/8 long CAT. NO.	1" OD x 1-1/4 long CAT. NO.
#0 thru #6	.141	1001	1101	1201
#7-#8-5/32	.168	1002	1102	1202
#9-#10-3/16	.194	1003	1103	1203
#12-7/32	.220	1004	1104	1204
#14-1/4	.255	1005	1105	1205
9/32	.286	1006	1106	1206
5/16	.318	1007	1107	1207
11/32	.349	1008	1108	1208
3/8	.381	1009*	1109	1209
13/32-7/16	.323	1010*	1110	1210
15/32	.354	—	1111	1211
1/2	.367	—	1112	1212
17/32	.398	—	1113	1213
9/16	.429	—	1114	1214
19/32	.460	—	1115*	1215
5/8	.480	—	1116*	1216
21/32	.511	—	1117*	1217
11/16	.542	—	1118*	1218
23/32	.573	—	—	1219
3/4	.590	—	—	1220
25/32	.621	—	—	1221
13/16	.652	—	—	1222
27/32	.684	—	—	1223
7/8	.697	—	—	1224
15/16	.760	—	—	1225*
1"	.800	—	—	1226*
1-1/16-1-1/8	.896	—	—	1227*

PIPE TAP BUSHINGS

1/16	.312	1050	1150	1250
1/8	.437	1051	1151*	1251
1/4	.562	—	1152*	1252
3/8	.701	—	—	1253
1/2	.688	—	—	1254
5/8	.813	—	—	1255
3/4	.907	—	—	1256*

RETAINING SPRINGS

—	MB00-RS	MB0-RS	MB2-RS
---	---------	--------	--------

UNIQUE DESIGN -- Bushing grips the tap around three-quarters of its circumference, and fits the hole in the floating holder in the same manner. Result? More accurate fitting and line-up of tap and bushing.

POSITIVE OPERATION -- Entire length of bushing firmly clamps tap shank. Less chance of tap being pushed back. HEAT-TREATED FOR LONG LIFE -- Made of quality carburizing steel and heat-treated.

TAP BUSHING SETS

00TAPSET = 1001 thru 1051
0TAPSET = 1101 thru 1152
2ATAPSET = 1202 thru 1214
2BTAPSET = 1215 thru 1227
2CTAPSET = 1250 thru 1256

- The sets are packaged in a convenient storage case.
- The price for a set is 10% less than when each bushing is ordered separately.

* Note: Thin wall bushings have only 1 split instead of 2 and have no retainer springs

** NOMINAL OD OF THREAD THAT TAP WILL CUT.

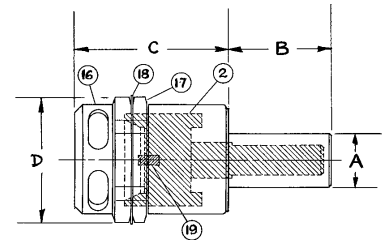
*** FOR TAPS SMALLER THAN #7 USE #0 TAP HOLDER AND TA02 ADAPTER.

RELEASING DIE HOLDERS FOR ACORN DIES

RELEASING ACORN DIE HOLDER SPECIFICATIONS

ACORN DIES ARE AVAILABLE FOR THESE HOLDERS - CALL FOR QUOTATION

CAT. NO.	A	B	C	D	ACORN DIE SIZE
ADH000	5/8	1-3/16	1-5/8	1-3/16	1
ADH00	5/8	1-1/4	1-13/16	1-9/16	2
ADH1	3/4	1-3/4	2-5/16	1-3/4	2
ADH2	1"	2"	2-7/8	2-7/16	3
ADH3	1-1/4	2-9/16	4-1/16	2-13/16	4



* These holders have the same exclusive releasing clutch mechanism as used on our releasing Tap Holder.

* A keyed washer is used between the adjusting cap and the lock nut. Tightening lock nut will not change the adjustment of die.