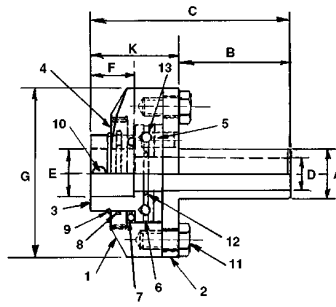


FLOATING (ADJUSTABLE) REAMER HOLDER

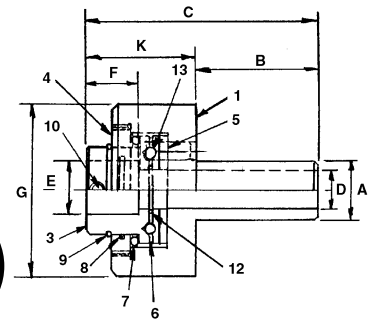
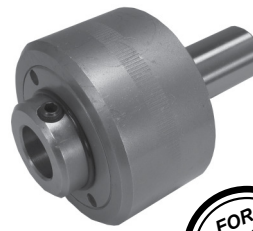


- Manually adjustable up to .015 for machine misalignment
- Exclusive wave spring construction gives automatic centering - does not depend on "O" rings for float.
- .005 Total float
- Tangent opposed ball raceways give full lateral float.
- Rides on free rolling balls - no pins to cause jamming

SEE BELOW FOR REAMER BUSHINGS.

CAT. NO.	A	B	C	D	E	F	G	K
FARH00	5/8	1-1/4	2-11/32	3/8	1/2	9/16	1-5/8x2-1/4	1-1/16
FARH0	3/4	1-5/8	3-1/8	1/2	5/8	3/4	2-1/8x3	1-1/2
FARH2	1"	2-1/8	4"	11/16	1"	7/8	2-1/2x3-3/8	1-7/8

FLOATING REAMER HOLDERS



- Exclusive wave spring construction gives automatic centering - does not depend on "O" rings for float.
- .005 Total float
- Tangent opposed ball raceways give full lateral float.
- Rides on free rolling balls - no pins to cause jamming

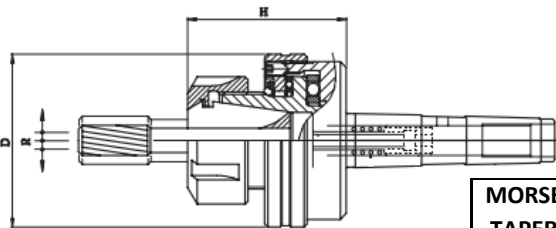
SEE BELOW FOR REAMER BUSHINGS.

CAT. NO.	A	B	C	D	E	F	G	K
FRH00	5/8	1-1/4	2-3/8	3/8	1/2	9/16	1-3/4	1-1/8
FRH0	3/4	1-5/8	3-3/16	1/2	5/8	3/4	2-1/4	1-9/16
FRH2	1"	2-1/8	4-1/16	11/16	1"	7/8	3"	1-15/16

BUSHINGS FOR SOMMA TOOL REAMER HOLDERS (Above)

REAMER SETS	
00REAMER SET	SET OF 12 #00 BUSHINGS
0REAMER SET	SET OF 13 #0 BUSHINGS
2REAMER SET	SET OF 16 #2 BUSHINGS

REAMER SIZE	BUSHING I.D.	#00 BUSHINGS 1/2" O.D. X 3/4" L CAT. NO.	#0 BUSHINGS 5/8" O.D. X 15/16" L CAT. NO.	#2 BUSHINGS 1" O.D. X 1-1/4" L CAT. NO.
1/16"	0.059	MB00-.059	MB0-.059	MB2-.059
5/64" & 3/32"	0.088	MB00-.088	MB0-.088	MB2-.088
7/64" & 1/8"	0.119	MB00-.119	MB0-.119	MB2-.119
9/64" & 5/32"	0.151	MB00-.151	MB0-.151	MB2-.151
11/64" & 3/16"	0.181	MB00-.181	MB0-.181	MB2-.181
13/64" & 7/32"	0.208	MB00-.208	MB0-.208	MB2-.208
15/64" & 1/4"	0.241	MB00-.241	MB0-.241	MB2-.241
17/64" & 9/32"	0.250	MB00-.250	MB0-.250	MB2-.250
19/64" - 11/32"	0.281	MB00-.281	MB0-.281	MB2-.281
23/64" - 13/32"	0.312	MB00-.312	MB0-.312	MB2-.312
27/64" - 15/32"	0.375	MB00-.375	MB0-.375	MB2-.375
31/64" - 19/32"	0.437	MB00-.437	MB0-.437	MB2-.437
5/8" - 23/32"	0.562		MB0-.562	MB2-.562
3/4" - 27/32"	0.625			MB2-.625
7/8" - 31/32"	0.750			MB2-.750
1" - 1-1/8"	0.875			MB2-.875



MORSE TAPER SHANK ER COLLET FLOATING REAMER HOLDER W/ COOLANT PORT

SEE PAGES 154-158 FOR COLLETS

Features:

- The free moving ball bearing drive allows reamers to follow the existing drilled hole for high quality work.
- Could be used for synchronized tapping operations on lathes and CNC machining centers.
- Through the shank or port coolant capability

MORSE TAPER	COLLET SERIES	COLLET CAPACITY	HOLDER PART NUMBER	FLOAT R (mm)	D (mm)	H (mm)	NUT O.D. (mm)
2	ER16	1/16 TO 13/32	MT2ERFC16	1	42	44	28
2	ER20	1/16 TO 1/2	MT2ERFC20	1	50	50	34
2	ER25	1/16 TO 5/8	MT2ERFC25	1	57	53	42
3	ER16	1/16 TO 13/32	MT3ERFC16	1	42	44	28
3	ER20	1/16 TO 1/2	MT3ERFC20	1	50	50	34
3	ER25	1/16 TO 5/8	MT3ERFC25	1	57	53	42
3	ER32	3/32 TO 3/4	MT3ERFC32	1.5	69	58	50
3	ER40	1/8 TO 1"	MT3ERFC40	1.5	79	64	63
4	ER32	3/32 TO 3/4	MT4ERFC32	1.5	69	58	50
4	ER40	1/8 TO 1"	MT4ERFC40	1.5	79	64	63