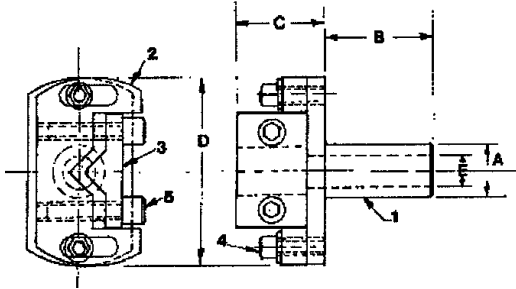
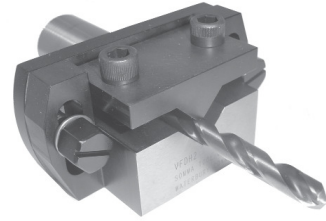


### "V" TYPE ADJUSTABLE (FLOATING) DRILL HOLDER

- ELIMINATES BUSHINGS
- HOLDS ANY SIZE DRILL SECURELY
- REVERSIBLE CLAMP
- HARDENED GROUND JAWS ASSURE SQUARENESS

\* Clamp can be reversed - use with "V" inside for small drills or reverse for large drills.

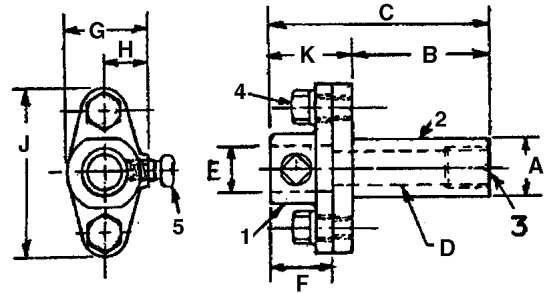


CAT. NO.	A	B	C	D	E	CAPACITY	
						MIN.*	MAX.*
VFDH00	5/8	1-1/8	1"	2"	13/32	1/64	1/2
VFDH0S	3/4	1-3/4	1"	2"	13/32	1/64	1/2
VFDH0	3/4	1-1/2	1-1/4	2-5/8	7/16	1/16	3/4
VFDH2	1"	1-3/4	1-5/8	3-1/2	11/16	1/8	1"

### FLOATING DRILL HOLDERS (ADJUSTABLE)

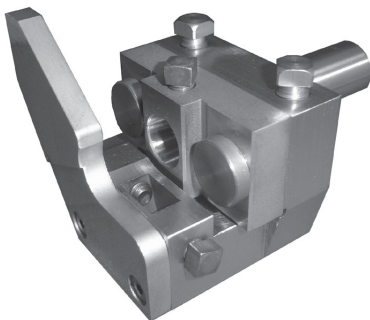


- Fully adjustable to correct for machine misalignment
- Hardened alloy steel
- Precision ground for perfect alignment
- Holds standard drill bushings - see pages 142 - 144.



CAT. NO.	A	B	C	D	E	F	G	H	J	K
FDH00	5/8	1-1/2	2-13/32	3/8	1/2	11/16	15/16	1/2	1-13/16	15/16
FDH1	3/4	2"	3-5/32	1/2	5/8	7/8	1-5/16	11/16	2-7/16	1-5/32
FDH2	1"	2"	3-7/16	11/16	1"	1-1/8	1-5/8	7/8	2-15/16	1-7/16
FDH3	1-1/4	2-3/4	4-1/2	3/4	1-1/4	1-3/8	2-3/8	1-3/16	4"	1-3/4
FDH4A	1-1/2	3-1/4	4-13/16	3/4	1"	1-5/32	1-7/8	15/16	3-3/4	1-9/16
FDH4B	1-1/2	3-1/4	5-7/16	1-1/16	1-1/2	1-19/32	2-5/8	1-5/16	4-3/4	2-5/32

### ADJUSTABLE DRILL & FACING TOOL HOLDER



- An adjustable drill holder which can also hold a blade for facing
- Stock stop plate for use in first position - allows the use of a form tool in the front cross slide
- Blade and drill can be set independently of each other
- Adjusting screw prevents drill from slipping back
- Holder can be used in any position
- Holds a 5/8" diameter drill bushing and a 3/8" square tool bit.

SEE PAGE 142 FOR DRILL BUSHINGS.

<b>Cat. No.</b>
2763-10-SA-SOMMA