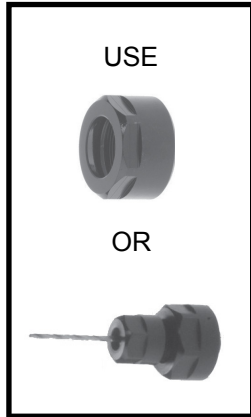


COLLET CHUCKS FOR STAR AND HANWHA SUB SPINDLES (BACKWORKING)

CAN BE ORDERED AS A STANDARD COLLET CHUCK OR WITHOUT THE COLLET NUT FOR USE WITH QUICK CHANGE HEAD ASSEMBLIES--SEE PAGE 121



SHOWN WITH OPTIONAL COOLANT LINE
(SEE PAGE 121)

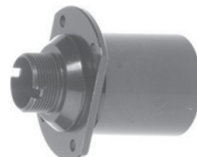
MACHINE MAKE	COLLET SERIES	COLLET RANGE	PROJECTION* W/O NUT	COOLANT PORT	CAT# WITH COLLET NUT	CAT# W/O COLLET NUT	SERIES# HEAD ASSY	SEE PHOTO
STAR	ER16	1/16 - 13/32	0.47	NO	STER16470	STER16470P	ER11S	1
STAR	ER16	1/16 - 13/32	0.75	YES	STER16750	STER16750P	ER11S	2
STAR	ER16	1/16 - 13/32	1.25	YES	STER161250	STER161250P	ER11S	3
STAR	ER20	1/16 - 1/2	0.97	YES	STER20970	STER20970P	ER16S	4
HANWHA	ER16	1/16 - 13/32	0.75	YES	HAER1633MM	HAER1633MMP	ER11S	5
HANWHA	ER16	1/16 - 13/32	0.75	YES	HAER1634MM	HAER1634MMP	ER11S	6

* ADD APPROX. .420 TO PROJECTION LENGTH WITH COLLET & NUT INSTALLED

SEE PAGE 121 FOR HEAD ASSEMBLIES
SEE PAGES 156-160 FOR COLLETS



4



5

33MM DIA. SHANK



6

34MM DIA. SHANK

STRAIGHT SHANK ADAPTER FOR STAR SUB SPINDLE WITH 1/2" I.D. AND COOLANT PORT



CAT# STSS0500