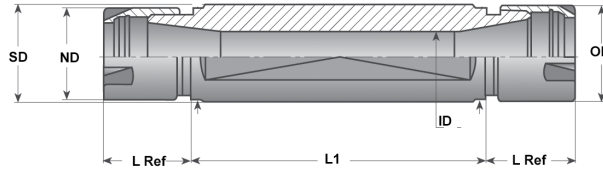


DOUBLE ENDED COLLET CHUCKS FOR SWISS MACHINES



SEE PAGES 156-161 FOR COLLETS



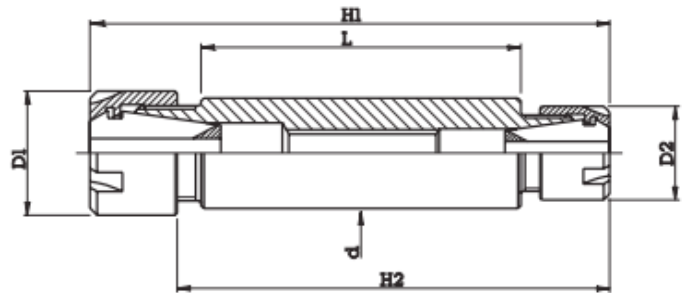
CAT. NO.	ND	SD	ID	L1	L	MACHINE TYPE	COLLET	CAPACITY
SS075DEER11	.630	.750	.295	2.756	.787	CITIZEN	ER11	1/16 to 1/4
SS075DEER16	.866	.750	.413	2.165	1.024	CITIZEN	ER16	1/16 to 13/32
SS100DEER16	.866	1.000	.413	2.441	1.102	STAR	ER16	1/16 to 13/32
METRIC								
SS16DEER11	16	16	7.5	50	20		ER11	0.5 to 7.0 MM
SS20DEER11	16	20	7.5	30	20	CITIZEN	ER11	0.5 to 7.0 MM
SS20DEER11L	16	20	7.5	50	20	CITIZEN	ER11	0.5 to 7.0 MM
SS20DEER16	22	20	10.5	55	26	CITIZEN	ER16	0.5 to 10.0 MM
SS22DEER16	22	22	10.5	55	28	STAR	ER16	0.5 to 10.0 MM
SS22DEER16L	22	22	10.5	75	28	STAR	ER16	0.5 to 10.0 MM
SS25DEER16	22	25	10.5	62	28		ER16	0.5 to 10.0 MM
SS32DEER20	28	32	13.5	55	28	STAR	ER20	1.0 to 13.0 MM
SS32DEER20L	28	32	13.5	75	28	STAR	ER20	1.0 to 13.0 MM

DOUBLE ENDED SWISS ER COLLET CHUCKS WITH DIFFERENT SERIES ER COLLETS ON EACH END

SEE PAGES 156-161 FOR COLLETS



COLLET SERIES	COLLET RANGE ENGLISH	COLLET RANGE METRIC
ER8		1 TO 5
ER11	1/16 TO 1/4	1 TO 7
ER16	1/16 TO 13/32	1 TO 10
ER20	1/16 TO 1/2	1 TO 13
ER25	1/8 TO 5/8	2 TO 16
ER32	3/32 TO 3/4	3 TO 20
ER40	1/8 TO 1"	4 TO 26



Shank Dia.	L	H1	H2	Collet D1	D1	Nut D1	Wrench D1	Collet D2	D2	Nut D2	Wrench D2	Part No.
3/4	50	85	68	ER16	22	ER16M	ER16MW	ER11	16	ER11M	ER11MW	SS075DEER16-11
3/4	50	91	72	ER20	28	ER20M	ER20MW	ER11	16	ER11M	ER11MW	SS075DEER20-11
20MM	50	85	68	ER16	22	ER16M	ER16MW	ER11	16	ER11M	ER11MW	SS20DEER16-11
20MM	50	91	72	ER20	28	ER20M	ER20MW	ER11	16	ER11M	ER11MW	SS20DEER20-11
22MM	45	90	71	ER20	28	ER20M	ER20MW	ER16	22	ER16M	ER16MW	SS22DEER20-16
22MM	60	105	86	ER20	28	ER20M	ER20MW	ER16	22	ER16M	ER16MW	SS22DEER20-16L
25MM	45	90	71	ER20	28	ER20M	ER20MW	ER16	22	ER16M	ER16MW	SS25DEER20-16
25MM	60	105	86	ER20	28	ER20M	ER20MW	ER16	22	ER16M	ER16MW	SS25DEER20-16L
25MM	45	91	71	ER25	35	ER25M	ER25MW	ER16	22	ER16M	ER16MW	SS25DEER25-16
25MM	60	106	86	ER25	35	ER25M	ER25MW	ER16	22	ER16M	ER16MW	SS25DEER25-16L
32MM	60	108	88	ER25	35	ER25M	ER25MW	ER20	28	ER20M	ER20MW	SS32DEER25-20