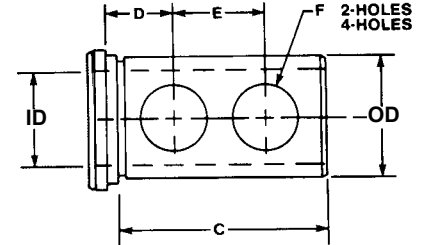


TYPE DD TOOLHOLDER BUSHING

With the combination of the industry standard "B" style split bushing and "J" set screw clearance bushing design, we have set a precedent with its new innovative "DD" Double Duty bushing. This new improved "DD" bushing with clearance holes and split milled flat can be used as a conventional "B" style or "J" style bushing. Select the O.D. size that fits your machine and order from the chart below.



SERIES CAT. NO.	SPECIFY CHOICE		CHOOSE FROM STANDARD I.D. SIZES SHOWN		C	D	E	F	
	O.D.	O.D.	INCH	METRIC				NO. HOLE	DIA HOLE
*6830	1-1/2"	40MM	3/8, 1/2, 5/8, 3/4, 7/8, 1, 1-1/4	10, 12, 16, 20, 25, 32	2-1/2"	11/16"	1-1/8"	2	7/8"
*6831	1-3/4"	45MM	1/2, 5/8, 3/4, 7/8, 1, 1-1/4, 1-1/2	12, 16, 20, 25, 32, 40	3"	3/4"	1-1/4"	2	7/8"
*6832	2"	50MM	1/2, 5/8, 3/4, 7/8, 1, 1-1/4, 1-1/2 1-3/4"	12, 16, 20, 25, 32, 40 45	3-1/2"	3/4"	1-1/2"	2	1"
*6833	2-1/2"	65MM	1/2, 5/8, 3/4, 7/8, 1, 1-1/4, 1-1/2 1-3/4, 2, 2-1/4"	20, 25, 32, 40, 45, 50	4"	7/8"	1-3/4"	2	1-1/4"
*6834	3"	80MM	1, 1-1/4, 1-1/2, 1-3/4, 2, 2-1/4, 2-1/2"	25, 32, 40, 45, 50, 60 65	4-1/2"	1"	2"	4	1-1/4"
*6835	3-1/2"	90MM	1-1/2, 1-3/4, 2, 2-1/4, 2-1/2, 3"	25, 32, 40, 45, 50, 60 65	5-1/4"	1-1/4"	2-1/2"	4	1-1/4"

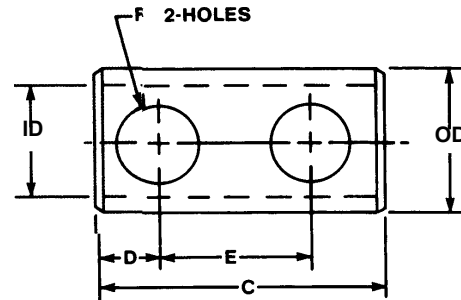
NOTE: SERIES CATALOG NUMBERS SHOWN ARE FOR INCH O.D./ I.D. COMBINATIONS.

FOR BUSHINGS WITH ANY METRIC DIMENSIONS ADD A LETTER **M** TO THE CATALOG NUMBER

TO ORDER, SPECIFY SERIES CAT. NO., O.D. AND I.D. SIZE

TYPE L TOOLHOLDER BUSHING

All "L" style bushings are shoulder-less, have set screw clearance holes opposite the slot and have a split with a flat on the O.D. "L" Style Bushings are used to adapt drills, boring bars and shank tools to any size in a standard turret or toolholder. We have a full selection and assortment of these bushings. Select the O.D. size that fits your machine and order from the chart below.



SERIES CAT. NO.	SPECIFY CHOICE		CHOOSE FROM STANDARD I.D. SIZES SHOWN		C	D	E	F	
	O.D.	O.D.	INCH	METRIC				NO. HOLE	DIA HOLE
*6850	1-1/2"	40MM	3/8, 1/2, 5/8, 3/4, 7/8, 1, 1-1/4	10, 12, 16, 20, 25, 32	3"	3/4"	1-5/8"	2	7/8"
*6851	1-3/4"	45MM	1/2, 5/8, 3/4, 7/8, 1, 1-1/4, 1-1/2	12, 16, 20, 25, 32, 40	3"	3/4"	1-5/8"	2	7/8"
*6852	2-1/4"	60MM	5/8, 3/4, 1, 1-1/4, 1-1/2, 1-3/4, 2	16, 20, 25, 32, 40, 50	4-1/2"	7/8"	2"	2	1"
*6853	2-3/4"	70MM	3/4, 1, 1-1/4, 1-1/2, 1-3/4, 2, 2-1/4"	20, 25, 32, 40, 50	4-1/2"	7/8"	2"	2	1"

NOTE: SERIES CATALOG NUMBERS SHOWN ARE FOR INCH O.D./ I.D. COMBINATIONS.

FOR BUSHINGS WITH ANY METRIC DIMENSIONS ADD A LETTER **M** TO THE CATALOG NUMBER

TO ORDER, SPECIFY SERIES CAT. NO., O.D. AND I.D. SIZE