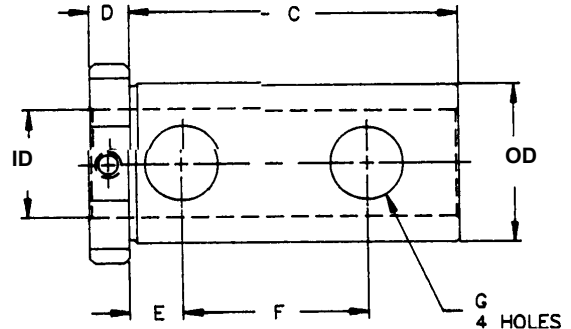


### TYPE LB TOOLHOLDER BUSHING

This Type LB Toolholder Bushing with long solid body, has four clearance holes so that you can clamp directly on the tool with Set Screws for positive alignment of the cutting edge of the tool. Manufactured to include clearance notches for coolant. They are hardened and precision ground concentric. Select the O.D. size that fits your machine and order from the chart below.



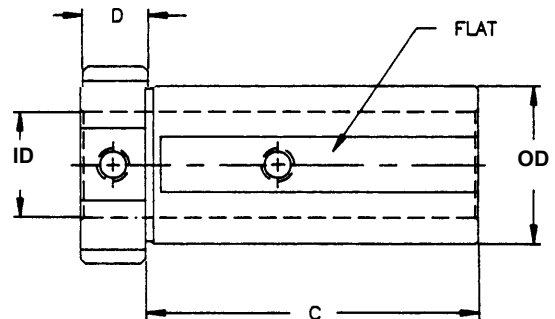
SERIES CAT. NO.	SPECIFY CHOICE		CHOOSE FROM STANDARD I.D. SIZES SHOWN		C	D	E	F	G
	O.D.	O.D.	INCH	METRIC					
*6858	1-1/4"	32MM	3/8, 1/2, 5/8, 3/4, 7/8, 1	10, 12, 16, 20, 25	3-1/8"	3/8"	1/2"	1-3/4"	5/8"
*6859	1-1/2"	40MM	3/8, 1/2, 5/8, 3/4, 7/8, 1, 1-1/4	10, 12, 16, 20, 25, 32	3-1/8"	3/8"	1/2"	1-3/4"	5/8"
*6860	2"	50MM	1/2, 5/8, 3/4, 7/8, 1, 1-1/4, 1-1/2, 1-3/4	12, 16, 20, 25, 32, 40, 45	4-1/2"	1/2"	1/2"	2-3/4"	11/16"

NOTE: SERIES CATALOG NUMBERS SHOWN ARE FOR INCH O.D./ I.D. COMBINATIONS.

**FOR BUSHINGS WITH ANY METRIC DIMENSIONS ADD A LETTER M TO THE CATALOG NUMBER TO ORDER, SPECIFY SERIES CAT. NO., O.D. AND I.D. SIZE**

### TYPE LBF TOOLHOLDER BUSHING

These Type LBF Type Bushings are manufactured with a flat for clamping the Toolholder and two set screws for clamping a variety of Drills, Boring Bars and other Shank Tools. Equipped with two clearance notches for coolant, they are Heat Treated and precision ground concentric. This Universal Style is good for Coolant Through the Tool applications due to its solid configuration. Select the O.D. size that fits your machine and order from the chart below.



SERIES CAT. NO.	SPECIFY CHOICE		CHOOSE FROM STANDARD I.D. SIZES SHOWN		C	D
	O.D.	O.D.	INCH	METRIC		
*6863	1-1/4"	32MM	3/8, 1/2, 5/8, 3/4, 7/8, 1	10, 12, 16, 20, 25	2.812	5/8"
*6864	1-1/2"	40MM	3/8, 1/2, 5/8, 3/4, 7/8, 1, 1-1/4	10, 12, 16, 20, 25, 32	3.156	5/8"
*6865	2"	50MM	1/2, 5/8, 3/4, 7/8, 1, 1-1/4, 1-1/2, 1-3/4	12, 16, 20, 25, 32, 40, 45	3.750	3/4"

NOTE: SERIES CATALOG NUMBERS SHOWN ARE FOR INCH O.D./ I.D. COMBINATIONS.

**FOR BUSHINGS WITH ANY METRIC DIMENSIONS ADD A LETTER M TO THE CATALOG NUMBER TO ORDER, SPECIFY SERIES CAT. NO., O.D. AND I.D. SIZE**