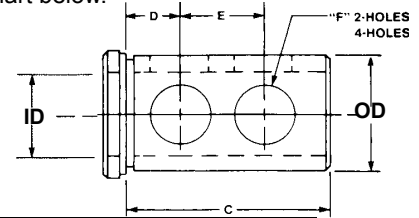


### TYPE J TOOLHOLDER BUSHING

This Type J Toolholder Bushing, with long solid body, has clearance holes so that you can clamp directly on the tool with set screws for positive alignment of the cutting edge of the tool. They are hardened and precision ground concentric.

Select the O.D. size that fits your machine and order from the chart below.



SERIES CAT. NO.	SPECIFY CHOICE		CHOOSE FROM STANDARD I.D. SIZES SHOWN		C	D	E	F	
	O.D.	O.D.	INCH	METRIC				NO. HOLE	DIA HOLE
*6819	3/4"	20MM	1/4, 5/16, 3/8, 1/2	6, 8, 10, 12	1-1/2"	3/8"	13/16"	2	3/8"
*6820	1"	25MM	3/8, 1/2, 5/8, 3/4	10, 12, 16, 20	1-3/4"	7/16"	7/8"	2	5/8"
*6821	1-1/4"	32MM	3/8, 1/2, 5/8, 3/4, 7/8, 1	10, 12, 16, 20, 25	2-1/8"	5/8"	1"	2	3/4"
*6822	1-1/2"	40MM	3/8, 1/2, 5/8, 3/4, 7/8, 1, 1-1/4	10, 12, 16, 20, 25, 32	2-1/2"	11/16"	1-1/8"	2	7/8"
*6823	1-3/4"	45MM	1/2, 5/8, 3/4, 7/8, 1, 1-1/4, 1-1/2	12, 16, 20, 25, 32, 40	3"	3/4"	1-1/4"	2	7/8"
*6824	2"	50MM	1/2, 5/8, 3/4, 7/8, 1, 1-1/4, 1-1/2 1-3/4"	12, 16, 20, 25, 32, 40 45	3-1/2"	3/4"	1-1/2"	2	1"
*6825	2-1/2"	65MM	3/4, 7/8, 1, 1-1/4, 1-1/2, 1-3/4, 2, 2-1/4"	20, 25, 32, 40, 45, 50	4"	7/8"	1-3/4"	2	1-1/4"
*6826	3"	80MM	1, 1-1/4, 1-1/2, 1-3/4, 2, 2-1/4, 2-1/2"	25, 32, 40, 45, 50, 60 65	4-1/2"	1"	2"	4	1-1/4"
*6827	3-1/2"	90MM	1, 1-1/4, 1-1/2, 1-3/4, 2, 2-1/4, 2-1/2, 3"	25, 32, 40, 45, 50, 60 65	5-1/4"	1-1/4"	2-1/2"	4	1-1/4"

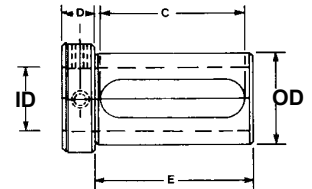
NOTE: SERIES CATALOG NUMBERS SHOWN ARE FOR INCH O.D./ I.D. COMBINATIONS.

FOR BUSHINGS WITH ANY METRIC DIMENSIONS ADD A LETTER **M** TO THE CATALOG NUMBER TO ORDER, SPECIFY SERIES CAT. NO., O.D. AND I.D. SIZE

### TYPE Z TOOLHOLDER BUSHING

The most flexible Toolholder Bushing for all types of CNC Turning Centers, Turret Lathes and Chucks. The Elongated Slot gives the user a complete interchangeability with all brands of equipment. The added Set Screws in the Head allow for increased rigidity. The bushings are hardened and precision ground concentric. Can also be used for Preset Tooling.

Select the O.D. size that fits your machine and order from the chart below.



SERIES CAT. NO.	SPECIFY CHOICE		CHOOSE FROM STANDARD I.D. SIZES SHOWN		SPECIFY LENGTH CHOICE DIM. E & C						
	O.D.	O.D.	INCH	METRIC	Z (STD)		ZS (SHORT)		ZL (LONG)		D
*6840	3/4"	20MM	1/4, 5/16, 3/8, 1/2	6, 8, 10, 12	2-1/2"	2-3/8"					1/2"
*6841	1"	25MM	1/4, 5/16, 3/8, 1/2, 5/8, 3/4	8, 10, 12, 16, 20	2-3/4"	2-3/8"					1/2"
*6842	1-1/4"	32MM	3/8, 1/2, 5/8, 3/4, 7/8, 1"	10, 12, 16, 20, 25	3"	2-5/8"	2-1/4"	1-7/8"	3-3/4"	3-1/8"	5/8"
*6843	1-1/2"	40MM	3/8, 1/2, 5/8, 3/4, 7/8, 1", 1-1/4	10, 12, 16, 20, 25, 32	3-1/4"	2-7/8"	2-1/2"	2-1/8"	4"	3-5/8"	3/4"
*6844	1-3/4"	45MM	1/2, 5/8, 3/4, 7/8, 1", 1-1/4, 1-1/2	12, 16, 20, 25, 32, 40	3-1/2"	3-1/8"	2-3/4"	2-3/8"	4-1/4"	3-7/8"	3/4"
*6845	2"	50MM	1/2, 5/8, 3/4, 7/8, 1, 1-1/4, 1-1/2, 1-3/4"	12, 16, 20, 25, 32, 40, 45	3-3/4"	3-1/2"	3"	2-5/8"	4-1/2"	4-1/8"	3/4"
*6846	2-1/2"	65MM	5/8, 3/4, 7/8, 1, 1-1/4, 1-1/2, 1-3/4, 2, 2-1/4"	16, 20, 25, 32, 40, 45, 50	4-1/4"	3-7/8"	3-1/2"	3-1/8"	5"	4-5/8"	3/4"
*6847	3"	80MM	1", 1-1/4, 1-1/2, 1-3/4, 2", 2-1/4, 2-1/2"	25, 32, 40, 50, 60, 65	4-3/4"	4-3/8"	3-3/4"	3-3/8"	5-3/4"	5-3/8"	3/4"
*6848	3-1/2"	90MM	1-1/4, 1-1/2, 1-3/4, 2", 2-1/4, 2-1/2, 3"	32, 40, 50, 60, 65	5-1/2"	4-7/8"	4-1/2"	3-7/8"	6-1/2"	5-7/8"	1"
*6849	4"	100MM	1-1/2, 1-3/4, 2", 2-1/4, 2-1/2, 3"	40, 50, 60, 65, 80	6-1/4"	5-5/8"	5"	4-3/8"	7-1/2"	4-3/8"	1"

NOTE: SERIES CATALOG NUMBERS SHOWN ARE FOR INCH O.D./ I.D. COMBINATIONS.

FOR BUSHINGS WITH ANY METRIC DIMENSIONS ADD A LETTER **M** TO THE CATALOG NUMBER TO ORDER, SPECIFY SERIES CAT. NO., O.D. AND I.D. SIZE AND LENGTH CHOICE-Z, ZS OR ZL