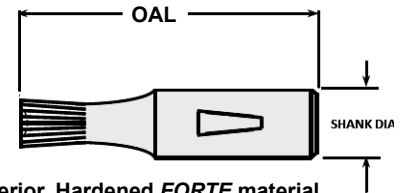
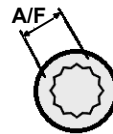
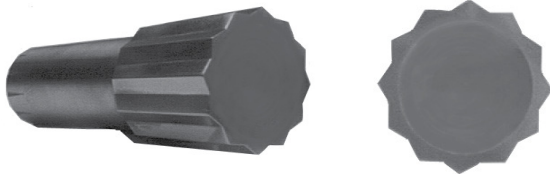


INCH /Double Hex, for ORBHD/...Holders			
3/4" (.750) Shank Diameter x 2-3/4" (2.750) OAL			
DOUBLE HEX SIZE	Actual A/F*	Max Cutting Depth*	Part Number
13/32	.4097	.700	DHXHD-13/32
7/16	.4415	.730	DHXHD-7/16
15/32	.4725	.761	DHXHD-15/32
1/2	.5045	.796	DHXHD-1/2
17/32	.5357	.831	DHXHD-17/32
9/16	.5675	.872	DHXHD-9/16
19/32	.5987	.912	DHXHD-19/32
5/8	.6305	.959	DHXHD-5/8
21/32	.6617	1.011	DHXHD-21/32-F
11/16	.6935	1.071	DHXHD-11/16-F
23/32	.7242	1.438	DHXHD-23/32-F
3/4	.7565		DHXHD-3/4-F
25/32	.7877		DHXHD-25/32-F
13/16	.8195		DHXHD-13/16-F
27/32	.8512		DHXHD-27/32-F
7/8	.8845		DHXHD-7/8-F
29/32	.9157		DHXHD-29/32-F
15/16	.9470		DHXHD-15/16-F
31/32	.9781		DHXHD-31/32-F
1"	1.0095		DHXHD-1-F

METRIC /Double Hex, for ORBHD/...Holders			
3/4" (.750) Shank Diameter x 2-3/4" (2.750) OAL			
DOUBLE HEX SIZE	Actual A/F*	Max Cutting Depth*	Part Number
10.0MM	.3985	.689	DHXHD-10.0
11.0MM	.4365	.725	DHXHD-11.0
12.0MM	.4775	.766	DHXHD-12.0
13.0MM	.5165	.809	DHXHD-13.0
14.0MM	.5565	.857	DHXHD-14.0
15.0MM	.5965	.909	DHXHD-15.0
16.0MM	.6355	.967	DHXHD-16.0
17.0MM	.6775	1.039	DHXHD-17.0
18.0MM	.7145	1.118	DHXHD-18.0
19.0MM	.7575	1.247	DHXHD-19.0
20.0MM	.7945	1.438	DHXHD-20.0
21.0MM	.8355		DHXHD-21.0
22.0MM	.8785		DHXHD-22.0
23.0MM	.9155		DHXHD-23.0
24.0MM	.9565		DHXHD-24.0
25.0MM	.9935		DHXHD-25.0
26.0MM	1.0335		DHXHD-26.0



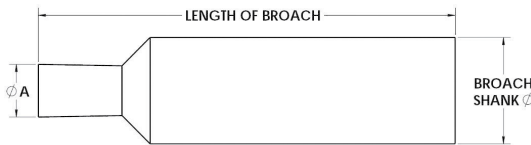
- * Superior, Hardened FORTE material
- * Precision ground
- * Angular clamping flat prevents pull out
- * Fit all brands of Rotating Broach Tools

INTERNAL ROTARY BROACH SETUP TOOL GAGE

Using this gage will allow you to center your broach tool in minutes.

To order:

Match the broach **shank diameter** and **broach length** of the broach currently using with the corresponding catalog number shown in the chart.



BROACH SHANK O.D.	LENGTH OF BROACH	CAT. NO.	A
.315 (8MM)	28MM (1.103")	CPSW-1.103	.156
.315 (8MM)	1-1/4"	CP00-1.25	.156
.315 (8MM)	1-1/2"	CP00-1.50	.156
.315 (8MM)	2"	CP00-2.00	.156
.500	1-1/2"	CP2-1.50	.250
.500	1-3/4"	CP2-1.75	.250
.500	2"	CP2-2.00	.250
.500	2-1/4"	CP2-2.25	.250
.500	2-1/2"	CP2-2.50	.250
.500	2-3/4"	CP2-2.75	.250
.500	3"	CP2-3.00	.250
.750	2-1/2"	CPHD-2.50	.250
.750	2-3/4"	CPHD-2.75	.250

GO / NO-GO GAGES with Handle



PART NUMBER	FOR CHECKING HEX SIZE	PART NUMBER	FOR CHECKING HEX SIZE
HEX GAGE SET-050	0.0500 / 0.0510	HEX GAGE SET-7/32	0.2187 / 0.2217
HEX GAGE SET-1/16	0.0625 / 0.0635	HEX GAGE SET-1/4	0.2500 / 0.2530
HEX GAGE SET-5/64	0.0781 / 0.0791	HEX GAGE SET-5/16	0.3125 / 0.3160
HEX GAGE SET-3/32	0.0937 / 0.0952	HEX GAGE SET-3/8	0.3750 / 0.3790
HEX GAGE SET-7/64	0.1094 / 0.1111	HEX GAGE SET-7/16	0.4375 / 0.4420
HEX GAGE SET-1/8	0.1250 / 0.1270	HEX GAGE SET-1/2	0.5000 / 0.5050
HEX GAGE SET-9/64	0.1406 / 0.1426	HEX GAGE SET-9/16	0.5625 / 0.5680
HEX GAGE SET-5/32	0.1562 / 0.1587	HEX GAGE SET-5/8	0.6250 / 0.6310
HEX GAGE SET-3/16	0.1875 / 0.1900	HEX GAGE SET-3/4	0.7500 / 0.7570

Custom made to your specifications or choose from Somma standard sizes shown

TORX STYLE PART NUMBER

- T5 GAGE SET
- T6 GAGE SET
- T7 GAGE SET
- T8 GAGE SET
- T10 GAGE SET
- T15 GAGE SET
- T20 GAGE SET
- T30 GAGE SET
- T40 GAGE SET
- T45 GAGE SET
- T50 GAGE SET
- T55 GAGE SET