

THE BEST COMBINATION BAR PULLER CUT-OFF TOOL FOR CNC

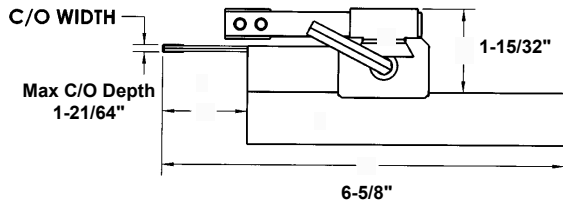
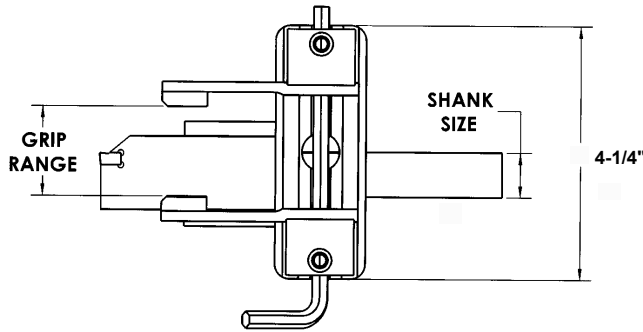
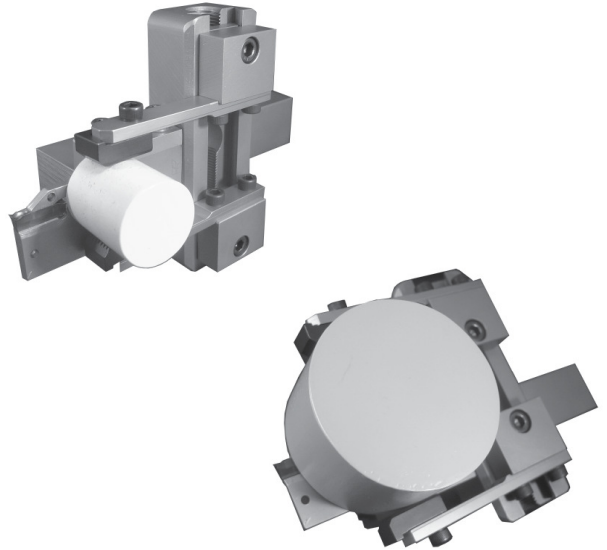
Exclusive features of the Somma design:

Synchronous adjustment;

Single wrench turn adjusts both gripping jaws
 Infinite size adjustment within the gripping range
 Quick change over adjustment to the next job

New modular design;

Allows easy mounting and removal in any wedge lock turret
 Also allows mounting of the shank in any position in the tool holder pocket



- Gripping range 1/8" to 3-1/4"
- Saves a turret position
- Reduces cycle time - no need to index between cut off and pulling operations
- One complete turn of screw moves both jaws in or out exactly .100"
- Jaw carriers can also be individually adjusted to simplify centering with cut off blade
- Designed to accept competitors' jaws and jaw fingers
- Can be purchased with or without the Cut-Off holder
- Will accept most major brands of Cut-Off holders*
 * (requires modification of the Cut-Off holder)

REPLACEMENT CUT-OFF BLADE

CAT. NO.	C/O WIDTH
CO-HLDR-BP*	0.118

*Sumitomo Brand

(INCLUDES STANDARD INSERT AND INSERT WRENCH)

SQUARE SHANK SIZE	CAT. NO. COMBO. HLDR With CUTOFF	CAT. NO. BAR PULLER Without CUTOFF
3/4"	BPCO/0.750	BPCO-1
1"	BPCO/1.000	BPCO-2
20mm	BPCO/20MM	BPCO-20
25mm	BPCO/25MM	BPCO-25

Designed for right hand use only

REPLACEMENT PARTS

DESCRIPTION	CAT. NO.
SPRING FINGER	PCO-5
SERRATED JAW	PCO-6
C/O INSERT FOR GENERAL STEEL	WCFR3 AC3000
C/O INSERT FOR HARD STL/ SLOW FEED	WCFR3A AC225
C/O INSERT FOR CAST IRON/ ALUMINUM	WCFR3B G10E

Compatible Cut-Off Holder Brands*

Brand Name	Brand Part Number
Sumitomo	STFH32-3
Iscar	SGFH32-3
Kennametal	DSB5340110
Sandvik	151.2-25-30
Manchester	340-110
Ingersol	TGB 32-3

*Usage requires cutting blade to length