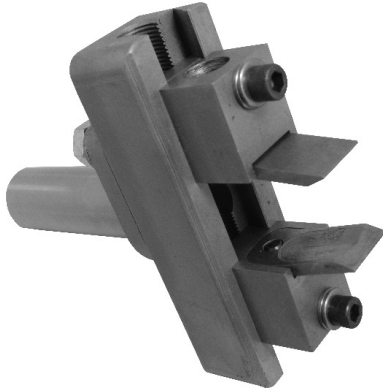
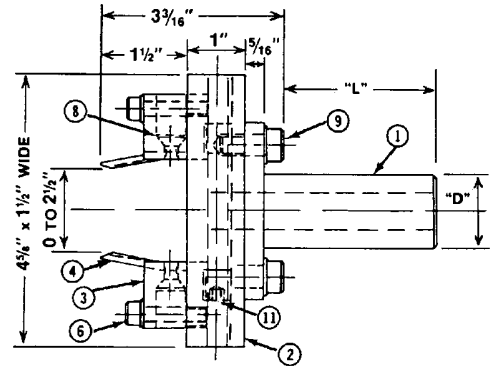


BAR PULLER FOR CNC LATHES



CAT. NO.	"D"	"L"
BP00	5/8" DIA.	2"
BP1	3/4" DIA.	2"
BP2	1" DIA.	2-5/8"
BP3	1-1/4" DIA.	2-5/8"
BP4	1-1/2" DIA.	2-5/8"
BP5	2" DIA.	3-5/16"



- 1/16 DIA MIN TO UP TO 2-1/2" DIA MAX ADJUSTABLE PULLING RANGE FOR BP00 UP TO BP4
- 1/16 DIA MIN TO UP TO 3" DIA MAX. ADJUSTABLE PULLING RANGE FOR BP5
- NO-SPRINGS, TENSION BUILT INTO JAWS FOR UP TO 250 LBS. OF GRIPPING PRESSURE
- JAWS ARE EASILY REPLACED

BAR PULLER PARTS

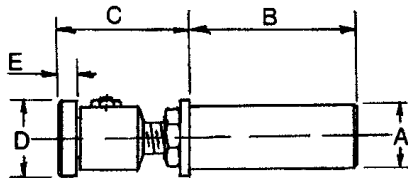
PART NO.	CAT. NO.
1. Shank	Call
2. Body	BP4-2 BP5-2
3. Slide	BP4-3
4. Jaw	BP4-4
6. Slide Clamp Screw & Washer	VFDH0-5
8. Jaw Screw	BP4-8
9. Clamp Screw & Washer	FDH2-4
11. Adjusting Screw	BP4-11

EASY TO ADJUST:

- SCREW JAWS DOWN TO SLIP FIT ON BAR
- BACK OFF BAR
- ADJUST BOTH JAWS DOWN 1/4 TURN
- LOCK IN PLACE AND PULLER IS READY TO USE
- PRESSURE CAN BE INCREASED OR DECREASED BY ADJUSTING JAWS IN OR OUT

ADJUSTABLE REVOLVING STOPS WITH INTERCHANGEABLE HEADS

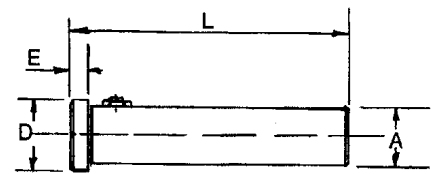
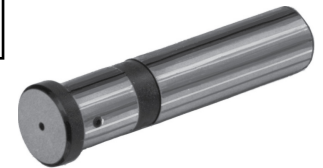
- STOP WASHER - PREVENTS PUSHBACK
- SMALL HOLE IN FACE OF HEAD - ELIMINATES LENGTH VARIATIONS



INTERCHANGEABLE HEADS

- FULL SIZE - FOR MOST JOBS
- SMALL - FOR LIGHT WORKPIECES
- OVERSIZE - (FOR RSA2 and RSS2)
- SOFT - 4140 STEEL - FOR MACHINING AS I.D. OR O.D. SUPPORT
- BOTH STYLE STOPS ARE SUPPLIED WITH (STANDARD) HEADS
- ANY OTHER HEAD CAN BE SUBSTITUTED WHEN ORDERING COMPLETE STOPS - MERELY SPECIFY CAT. NO. OF HEAD REQUIRED AND ADD PRICE DIFFERENTIAL (IF ANY) TO PRICE OF STOP

REVOLVING STOPS WITH INTERCHANGEABLE HEADS



CAT. NO.	A	B	C		D	E
			MIN.	MAX.		
RSA00	5/8	1-11/16	1-3/16	1-7/16	3/4	3/16
RSA0	3/4	2-7/16	1-7/16	1-11/16	1"	3/16
RSA2	1"	3-5/16	1-7/16	1-11/16	1-1/8	3/16

HEAD ONLY			
CAT. NO.	D	E	4140 STEEL
RSA00-4 (Std)	3/4	3/16	HARD
RSA00-4SM	5/16	3/16	HARD
RSA00-4S	3/4	1/2	SOFT
RSA0-4 (Std)	1"	3/16	HARD
RSA0-4SM	3/8	3/16	HARD
RSA0-4S	1"	1/2	SOFT
RSA2-4 (Std)	1-1/8	3/16	HARD
RSA2-4SM	5/8	1/2	HARD
RSA2-40S	1-5/8	1/4	HARD
RSA2-4S	1-1/8	3/4	SOFT
RSA2-40SS	1-5/8	3/4	SOFT

CAT. NO.	A	L	D	E
RSS-00	5/8	3"	3/4	3/16
RSS-0	3/4	4"	1"	3/16
RSS-2	1"	5"	1-1/8	3/16