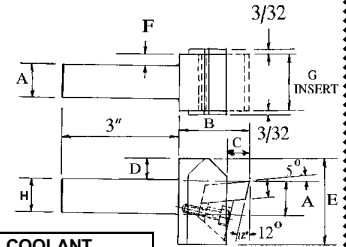




RESHARPENABLE QUICK CHANGE INSERT SHANK TYPE TOOL HOLDERS (Patent No. 5,345,846)

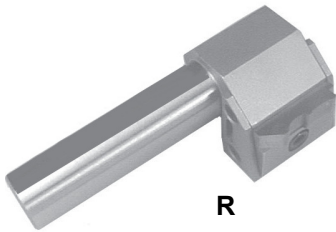
- Replaces full length H.S.S. toolbits
- Replaces brazed on type carbide tools



SEE PAGE 28
FOR INSERT
BLANKS.

CAT. NO.	W/ COOLANT ATTACHMENT	H	A	B	C	D	E	F	G INSERT SIZE	COOLANT ATTACHMENT ONLY
RQC-312	--	1/2	5/8	1-1/4	5/16	3/8	1-1/4	--	5/16 X 5/16	--
RQC00-1/2	RQC00-1/2-CS	1/2	1/2	1-3/32	5/16	13/32	1-3/8	1/8	3/4 X 5/16	RQC5/16-CA
RQC00-5/8	RQC00-5/8-CS	5/8	5/8	1-3/32	5/16	13/32	1-3/8	1/16	3/4 X 5/16	
RQC00-3/4	RQC00-3/4-CS	3/4	3/4	1-3/32	5/16	13/32	1-3/8	--	3/4 X 5/16	
RQC-5/8	RQC-5/8-CS	5/8	5/8	1-5/8	1/2	1/2	1-15/16	5/16	1-1/4 X 3/8	RQC3/8-CA
RQC-3/4	RQC-3/4-CS	3/4	3/4	1-5/8	1/2	1/2	1-15/16	1/4	1-1/4 X 3/8	
RQC-1.0	RQC-1.0-CS	1"	1"	1-5/8	1/2	1/2	1-15/16	1/8	1-1/4 X 3/8	
RQC-1.0-W	RQC-1.0-W-CS	1"	1"	1-5/8	1/2	1/2	1-15/16	1/8	1-3/4 X 3/8	
RQC-1.25	RQC-1.25-CS	1-1/4	1-1/4	1-5/8	1/2	1/2	1-15/16	--	1-1/4 X 3/8	
RQC-1.25-W	RQC-1.25-W-CS	1-1/4	1-1/4	1-5/8	1/2	1/2	1-15/16	1/4	1-3/4 X 3/8	

Eliminate Single Point Turning with RESHARPENABLE QUICK CHANGE INSERT GANG TYPE TOOL HOLDERS

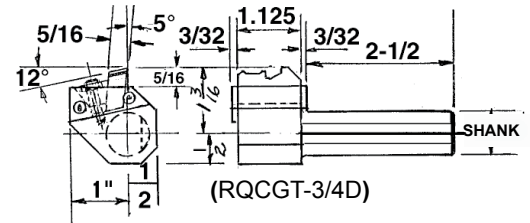


R

- Center height adjustment never has to be reset after sharpening insert.
- Machine downtime less than one minute for insert resharpenings or replacement.

SHANK DIA.	ROUND CAT. NO.
5/8"	RQCGT-5/8D
3/4"	RQCGT-3/4D
16MM	RQCGT-16D
20MM	RQCGT-20D

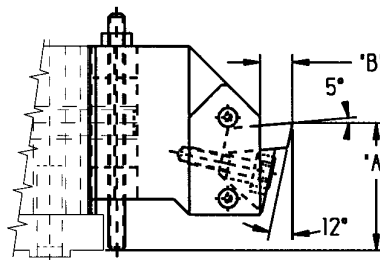
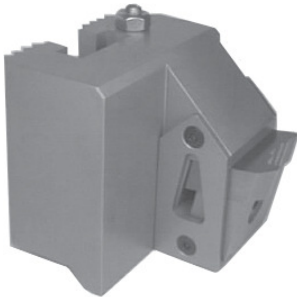
SQUARE SHANK	SQUARE CAT. NO.
5/8"	RQCGT-5/8S
3/4"	RQCGT-3/4S
16MM	RQCGT-16S
20MM	RQCGT-20S



Insert size is 1-1/8" x 5/16"
See page 28 for Insert blanks

(Patent No. 5,345,846)

RESHARPENABLE QUICK CHANGE INSERT SERRATED TOOL HOLDERS FOR GILDEMEISTER AND EUROTURNS MACHINES (Patent No. 5,345,846)



- Fits serrated tool blocks.
- Inserts offset close to spindle
- Reversible for upside down positions.
- Replaces horizontal dovetail form tool holders.
- Center height adjustment never has to be reset after sharpening insert.
- Machine downtime less than one minute for insert resharpenings or replacement.

SEE PAGE 28
FOR INSERT
BLANKS.

CAT. NO.	WITH COOLANT ATTACHMENT	MACHINE	"B"	INSERT SIZE	COOLANT ATTACHMENT ONLY
RQCGLD20	RQCGLD20-CS	GM16/20 &	5/16"	5/16 X 1-1/8	RQC5/16-CA
RQCGLD20-W	RQCGLD20-W-CS	EUROTURNS 6/20	5/16"	5/16 X 1-3/4	RQC5/16-CA
RQCGLD35-42-A	RQCGLD35-42-A-CS	GM35/42	1/2"	3/8 X 1-3/4	RQC3/8-CA
RQCGLD35-42-1.25	RQCGLD35-42-1.25-CS		1/2"	3/8 X 1-1/4	RQC3/8-CA
RQCEUR-32-1.25	RQCEUR-32-1.25-CS	EUR6/32-8/32	1/2"	3/8 X 1-1/4	RQC3/8-CA
RQCEUR-32-1.75	RQCEUR-32-1.75-CS		1/2"	3/8 X 1-3/4	RQC3/8-CA