

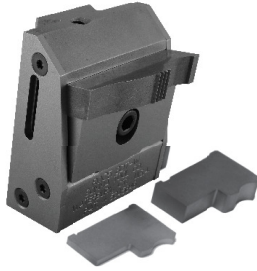
### RESHARPENABLE QUICK CHANGE DOVETAIL FORM TOOL HOLDERS FOR MULTIPLE SPINDLE MACHINES

(Patent No. 5,345,846)

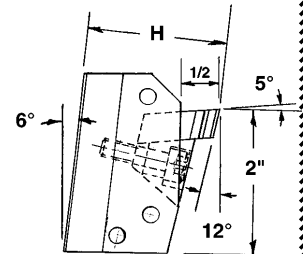
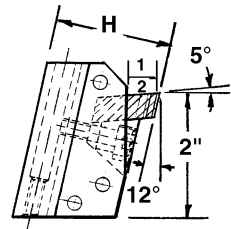
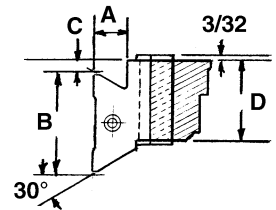
**NOW AVAILABLE WITH  
COOLANT ATTACHMENT**

- Increases insert life
- Improves part finish

Coolant attachment assembly available for updating existing holders.



COOLANT  
ATTACHMENT STYLE



WICKMAN STYLE

SEE PAGE 28  
FOR INSERTS

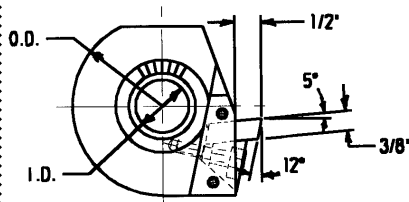
DOVETAIL SIZE	A	B	C	INSERT SIZE	H	CAT. NO.	W/COOLANT ATTACHMENT CAT. NO.
<b>FOR NATIONAL ACME MACHINES</b>							
5/8	19/64	.951	3/16	1-1/4 WIDE	1-1/2	RQC5/8DT	RQC5/8DT-CS
1	35/64	1.614	3/16	X	1-7/8	RQC1DT	RQC1DT-CS
1-1/4	35/64	1.882	3/16	3/8 THICK	1-7/8	RQC1-1/4DT	RQC1-1/4DT-CS
5/8	19/64	.951	7/16	1-3/4 WIDE	1-1/2	RQC5/8DT-W	RQC5/8DT-W-CS
1	35/64	1.614	7/16	X	1-7/8	RQC1DT-W	RQC1DT-W-CS
1-1/4	35/64	1.882	7/16	3/8 THICK	1-7/8	RQC1-1/4DT-W	RQC1-1/4DT-W-CS
5/8	19/64	.951	3/16	3/4 WIDE	1-5/8	RQC5/8DT-N	RQC5/8DT-N-CS
1	35/64	1.614	3/16	X	2"	RQC1DT-N	RQC1DT-N-CS
1-1/4	35/64	1.882	3/16	5/16 THICK	2"	RQC1-1/4DT-N	RQC1-1/4DT-N-CS
1-1/4	35/64	1.882	7/16	2-1/4 WIDE	1-7/8	RQC1-1/4DT-XW	RQC1-1/4DT-XW-CS
1-1/4	35/64	1.882	7/16	X 3/8 THICK			
1-1/4	35/64	1.882	7/16	2-3/4 WIDE	1-7/8	RQC1-1/4DT-WW	RQC1-1/4DT-WW-CS
1-1/4	35/64	1.882	7/16	X 3/8 THICK			
2-1/8	43/64	2.883	5/32	2-3/4 WIDE	2"	RQC2-1/8DT-WW	RQC2-1/8DT-WW-CS
1-1/4	35/64	1.882	7/16	X 3/8 THICK			
<b>FOR NEW BRITAIN MACHINES</b>							
5/8	19/64	.951	3/16	1-1/4 WIDE	1-1/2	RQC5/8DT	RQC5/8DT-CS
1.253	35/64	1.253	3/16	1-1/4 WIDE	1-7/8	RQCNBDT	RQCNBDT-CS
1.827	37/64	1.827	3/16	X 3/8 THICK	1-7/8	RQCNBDT-1.827	RQCNBDT-1.827-CS
1.253	35/64	1.253	7/16	1-3/4 WIDE	1-7/8	RQCNBDT-W	RQCNBDT-W-CS
1.827	37/64	1.827	7/16	X 3/8 THICK	1-7/8	RQCNBDT-1.827-W	RQCNBDT-1.827-W-CS
1.253	35/64	1.253	3/16	3/4 WIDE	1-7/8	RQCNBDT-N	RQCNBDT-N-CS
1.827	37/64	1.827	3/16	X 3/8 THICK	1-7/8	RQCNBDT-1.827-N	RQCNBDT-1.827-N-CS
<b>FOR WICKMAN MACHINES</b>							
.951"	21/64	.951	3/16	1-1/4 WIDE	1-5/8	RQCWK-951	RQCWK-951-CS
1.433"	25/64	1.433	3/16	X	1-5/8	RQCWK-1433	RQCWK-1433-CS
1.845"	33/64	1.845	3/16	3/8 THICK	1-7/8	RQCWK-1845	RQCWK-1845-CS
1.897"	33/64	1.897	3/16		1-7/8	RQCWK-1897	RQCWK-1897-CS
.951"	21/64	.951	7/16	1-3/4 WIDE	1-5/8	RQCWK-951W	RQCWK-951W-CS
1.433"	25/64	1.433	7/16	X	1-5/8	RQCWK-1433W	RQCWK-1433W-CS
1.845"	33/64	1.845	7/16	3/8 THICK	1-7/8	RQCWK-1845W	RQCWK-1845W-CS
1.897"	33/64	1.897	7/16		1-7/8	RQCWK-1897W	RQCWK-1897W-CS

Special coolant attachments are available.

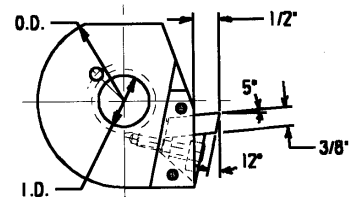
### RESHARPENABLE QUICK CHANGE CIRCULAR FORM TOOL HOLDERS FOR MULTIPLE SPINDLE MACHINES (PATENT NO. 5,345,846)

Available:

- 2-3/8" and 3-3/8" O.D. with pinholes or side teeth for National Acme Machines
- 2-1/4", 2-1/2", 3" and 3-1/2" O.D. with pinholes for New Britain and other machines
- with 3/8" x 1-1/4", 3/8" x 1-3/4", 3/8" x 2-1/4" re-sharpenable or throw-away inserts
- with coolant attachment



SIDE TEETH STYLE



PINHOLE STYLE