

RESHARPENABLE QUICK CHANGE SHAVE TOOL HOLDERS FOR MULTIPLE SPINDLE MACHINES

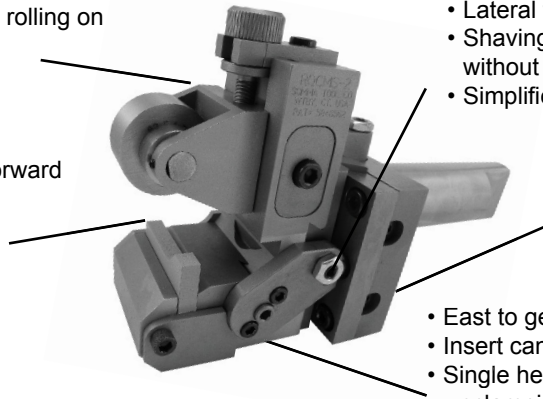
(Patent No. 5,848,562)

THE ONLY QUICK CHANGE SHAVE TOOL INSERT THAT CAN BE
RESHARPENED **WITHOUT AFFECTING ITS ORIGINAL:**

- Center Setting
- Part Diameter Setting
- Lateral Setting

- Roll slide can be rotated 180° for rolling on out board end of workpiece.
- Carbide roll pin

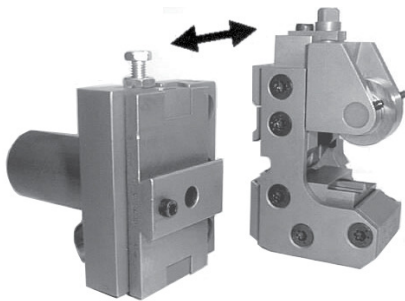
- Patented design clamps insert forward against holder face.
- Insert always located on roll centerline.
- Maintains part diameter and lengths even after reshaping.



- Lateral fine adjusting screw
- Shaving head can be moved sideways without moving shank or tool holder block.
- Simplifies alignment with roughing tools.

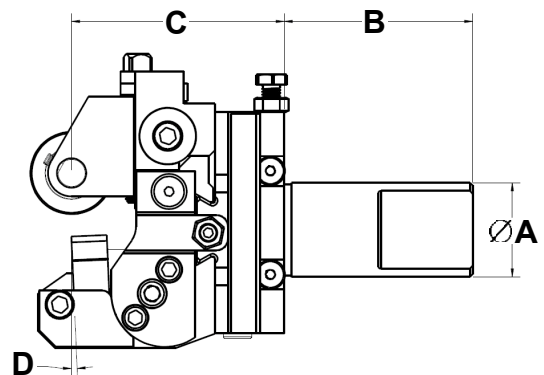
- Adjustable dovetail gib eliminates chatter due to normal wear.
- Adjustable spring tension to suit size of workpiece.

- East to get at from the side clamping of insert.
- Insert can be changed in less than a minute.
- Single hex wrench adjustment for clamping and unclamping of inserts.
- Swing away side plate for easy insert replacement.



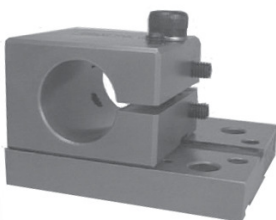
- Shaving head presettable for diameter off the machine.
- Shave tool roll head easily removable from body.
- Settings not affected because shank and body of shave toolholder remain clamped in machine.
- Easy one screw clamping locks head in place.
- Simplifies diameter setup of holder when changing jobs.

PART #	CAPACITY	INSERT SIZE	A	B	C	D
RQCMS-0	0-7/8"	1-1/8 X 3/8	1"	3-1/2	2-3/8	
RQCMS-0-1	1/8-1"	1-1/8 x 3/8	1"	3-1/2	2-3/8	2-1/2°
RQCMS-1	1/8-1"	1-1/8 X 3/8	1-1/4	4"	3-1/8	
RQCMS-2	1/8-1-1/4"	1-3/4 X 3/8	1-1/4	4"	3-1/2	
RQCMS-3	1/2-1-5/8"	1-3/4 X 3/8	1-1/2	4-1/2	3-1/2	0°
RQCMS-5	1-1/8-2-1/4"	1-3/4 X 3/8	1-1/2	4-1/2	3-1/2	

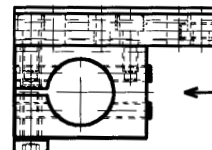


- Can also be used with throw-away inserts

- Ideal for datum point applications



CAT. NO.	CENTER HEIGHT	SHANK DIA.
RQCGLD20-SB	30MM	1.000"
RQCGLD50-SB	50MM	1.500"



SHANK HOLDING BLOCK CAN BE REPOSITIONED ON BASE PLATE CLOSE TO SPINDLE FOR UPSIDE DOWN CROSS SLIDE POSITIONS.