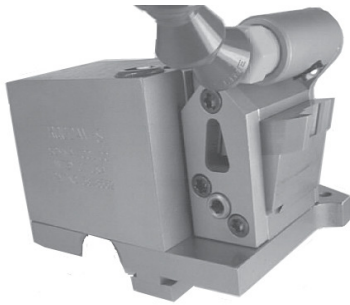
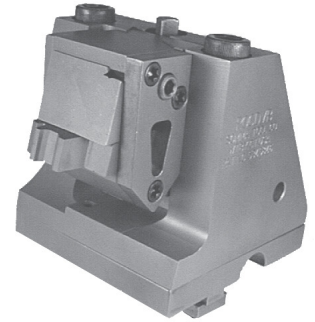
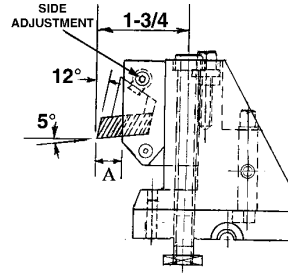
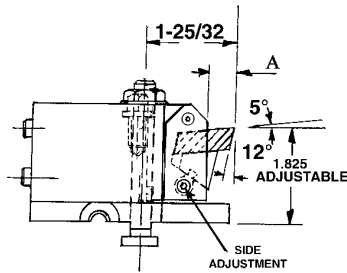


### RESHARPENABLE QUICK-CHANGE INSERT TOOL POSTS FOR DAVENPORT MACHINE With Side Adjusting Insert Clamp

(Patent No. 5,848,562)



1st Position  
Shown with  
Coolant Attachment



2nd Position

**NOW AVAILABLE WITH COOLANT ATTACHMENT**

- Increases tool life
- Improves part finish

#### COMPLETE TOOL POST 1ST POSITION

CAT. NO.	W/COOLANT ATTACHMENT CAT. NO.	INSERT SIZE	A	COOLANT ATTACHMENT ONLY
RQCDV-S	RQCDV-S-CS	1-1/4W X 3/8	1/2"	RQCDV-CA
RQCDV-W-S	RQCDV-W-S-CS	1-3/4W X 3/8	1/2"	RQCDV-CA
RQCDV-N-S	RQCDV-N-S-CS	1-1/8W X 5/16	5/16"	RQC5/16-CA
RQCDV-NN-S	RQCDV-NN-S-CS	3/4W X 5/16	5/16"	RQC5/16-CA

#### COMPLETE TOOL POST 2ND POSITION

CAT. NO.	W/COOLANT ATTACHMENT CAT. NO.	INSERT SIZE	A	COOLANT ATTACHMENT ONLY
RQCDV-B-S	RQCDV-B-S-CS	1-1/4W X 3/8	1/2"	RQCDV-CA
RQCDV-B-W-S	RQCDV-B-W-S-CS	1-3/4W X 3/8	1/2"	RQCDV-CA
RQCDV-B-N-S	RQCDV-B-N-S-CS	1-1/8W X 5/16	5/16"	RQC5/16-CA
RQCDV-B-NN-S	RQCDV-B-NN-S-CS	3/4W X 5/16	5/16"	RQC5/16-CA

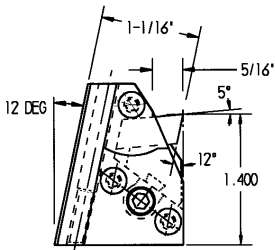
REPLACEMENT SIDE ADJUSTING INSERT SLIDES ONLY - TO FIT EXISTING RQCDV & RQCDVB HOLDERS	CAT. NO.	CAT. NO.	FITS	INSERT
SEE PAGE 28 FOR INSERT BLANKS.	RQCDV-SA	RQCDV-SA-CS	RQCDV	1-1/4 WIDE X 3/8
	RQCDV-W-SA	RQCDV-W-SA-CS		RQCDVB
	RQCDV-N-SA	RQCDV-N-SA-CS	RQCDV	1-1/8 WIDE X 5/16
	RQCDV-NN-SA	RQCDV-NN-SA-CS		3/4 WIDE X 5/16

### RESHARPENABLE QUICK CHANGE INSERT DOVETAIL FORM TOOL HOLDERS

With Side Adjusting Insert Clamp  
Fit Davenport Cross Slide Tool Holders

(Patent No. 5,848,562)

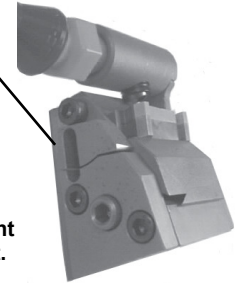
- Replaces HSS form tools and brazed on carbide form tools.



SEE PAGE 28 FOR INSERT BLANKS.

DOVETAIL SIZE	INSERT SIZE	CAT. NO.	W/COOLANT ATTACHMENT
5/8	1-1/8 WIDE X 5/16 THICK	RQCDV-DT	RQCDV-DT-CS
COOLANT ATTACHMENT ONLY		CAT. NO. RQCDV-DT-CA	

SWINGING SIDE PLATE FOR EASY INSERT REMOVAL

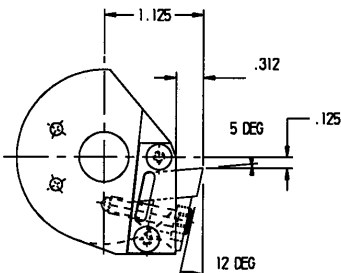


With coolant attachment.

### RESHARPENABLE QUICK CHANGE INSERT CIRCULAR TOOL HOLDERS FOR DAVENPORT MACHINES

(Patent No. 5,345,846)

- Machine downtime less than one minute for insert resharpenings or replacement.
- Replaces conventional circular form tools.



SEE PAGE 28 FOR INSERT BLANKS.

DIA.	CENTER HOLE	INSERT SIZE	CAT. NO.	W/COOLANT ATTACHMENT CAT. NO.
2"	9/16" DIA.	3/8 X 5/16"	RQCDV-C-N	RQCDV-C-N-CS
2"	9/16" DIA.	3/4 X 5/16	RQCDV-C	RQCDV-C-CS
2"	9/16" DIA.	1-1/8 X 5/16	RQCDV-C-W	RQCDV-C-W-CS
COOLANT ATTACHMENT ONLY			CAT. NO. RQCDV-C-CA	

