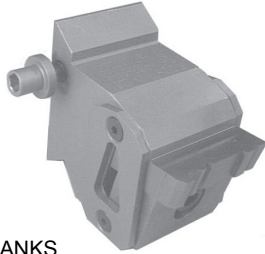
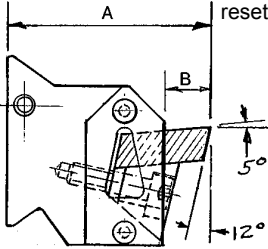


### RESHARPENABLE QUICK CHANGE INSERT

#### TOOL HOLDERS FOR TRAUB TNM28 AND TNM42 MACHINES

(Patent No. 5,345,846)

- Replaces horizontal dovetail form tool holders.
- Center height adjustment never has to be reset after sharpening insert.
- Machine downtime less than one minute for insert resharpenings or replacement.



CAT. NO.	W/COOLANT ATTACHMENT	"A"	"B"	INSERT SIZE
RQC-TNM28-.75	RQC-TNM28-.75-CS	57MM (2.244")	5/16	3/4" X 5/16
RQC-TNM28	RQC-TNM28-CS	57MM (2.244")	1/2	1-1/4" X 3/8
RQC-TNM28-1.75	RQC-TNM28-1.75-CS	57MM (2.244")	1/2	1-3/4" X 3/8
RQC-TNM42-1.25	RQC-TNM42-1.25-CS	80MM (3.150")	1/2	1-1/4" X 3/8
RQC-TNM42-1.75	RQC-TNM42-1.75-CS	80MM (3.150")	1/2	1-3/4" X 3/8
RQC-TNM42-.75	RQC-TNM42-.75-CS	80MM (3.150")	5/16	3/4" X 5/16

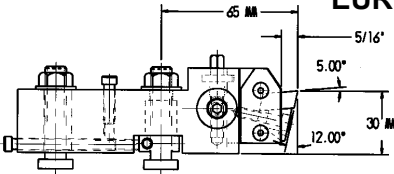
SEE PAGE 28 FOR INSERT BLANKS.

### RESHARPENABLE QUICK CHANGE INSERT

#### TOOL HOLDERS FOR TORNOS SAS16 MACHINES EUROTURN 6/20 AND GILDEMEISTER MACHINES

(Patent No. 5,345,846)

- Replaces dovetail form tools
- Replaces circular form tools
- Center height adjustment never has to be reset after sharpening insert.
- Machine downtime less than one minute for insert resharpenings or replacement.

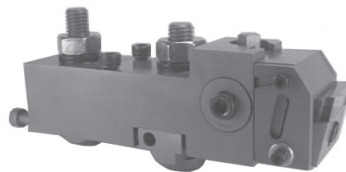


STYLE "A"

CAT. NO.	W/COOLANT ATTACHMENT	INSERT SIZE
RQC16/20-A	RQC16/20-A-CS	1-1/8 X 5/16
RQC16/20-A-N	RQC16/20-A-N-CS	3/4 X 5/16
RQC16/20-A-NN	RQC16/20-A-NN-CS	3/8 X 5/16
COOLANT ATTACHMENT ONLY		RQC5/16-CA

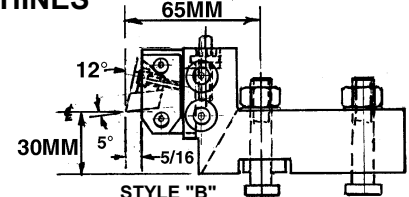
Fits:

**Tornos SAS16**      Euroturn 6/20  
Positions 1,2      Positions 1,4,6  
**Gildemeister GM20**  
Positions 1,4



SEE PAGE 28 FOR INSERT BLANKS.

FOR INSERT SLIDES ONLY, SEE RQC00 TOOLPOSTS PG. 26 .



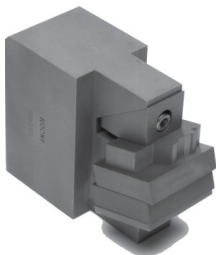
STYLE "B"

CAT. NO.	W/COOLANT ATTACHMENT	INSERT SIZE
RQC16/20-B	RQC16/20-B-CS	1-1/8 X 5/16
RQC16/20-B-N	RQC16/20-B-N-CS	3/4 X 5/16
RQC16/20-B-NN	RQC16/20-B-NN-CS	3/8 X 5/16
COOLANT ATTACHMENT ONLY		RQC5/16-CA

Fits:

**Tornos SAS16**      Euroturn 6/20  
Positions 3,4,5      Positions 2,3,5  
**Gildemeister GM20**  
Positions 2,5

### WIRE EDM 5° TOP RAKE BLOCK FIXTURES\* FOR RESHARPENABLE AND THROW-AWAY INSERTS



- Made of heat treated stainless steel
- Supplied with clamps for inserts and backup spacers
- Locates on recess in back side of insert for EDMing of all four sides
- Reversible for left hand cut

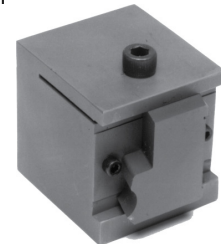
CATALOG NO. (INSERT WIDTHS)	NUMBER OF INSERTS	TYPE	OFFSET ANGLE
RQCWF (1.250 TO 2.750)	3 - 3/8" or 3 + 1 SPACER	SHARPENABLE	17°
	8-1/8" or 6 + 1 BACKUP	THROW-AWAY	
RQCWF00 (.375 TO 1.750)	3 - 5/16" or 3 + 1 SPACER	SHARPENABLE	17°
	8-1/8" or 6 + 1 BACKUP	THROW-AWAY	
RQCWFDS (1.125)	3 - 3/8" or 3 + 1 SPACER	SHARPENABLE	2-1/2°
	8-1/8" or 6 + 1 BACKUP	THROW-AWAY	
RQCWFDS-0 (1.750)	3 - 3/8" or 3 + 1 SPACER	SHARPENABLE	0°
	8-1/8" or 6 + 1 BACKUP	THROW-AWAY	

#### EDM FIXTURES ALSO AVAILABLE FOR:

INSERTS	ANGLE	CATALOG NO.
3/8 INSERTS	12°	RQCWF-12
5/16 INSERTS	12°	RQCWF00-12

### INSERT RESHARPENING FIXTURES

- For resharpening top surface of inserts
- Flexible jaw clamps insert securely
- For use on surface grinder with cup or dish wheel



CAT. NO.	INSERT WIDTH/TYPE
RQCSF	1-1/4" FORM
RQCSF-W	1-3/4" FORM/SHAVE
RQCSF00	3/4" FORM
RQCSF-DS	1-1/8" FORM/SHAVE
RQCSF00-N	3/8" FORM
RQCSF-XW	2-1/4" FORM
RQCSF-WW	2-3/4" FORM

\*SEE PAGE 29 for Dovetail Style Fixtures & EDM Base Plates