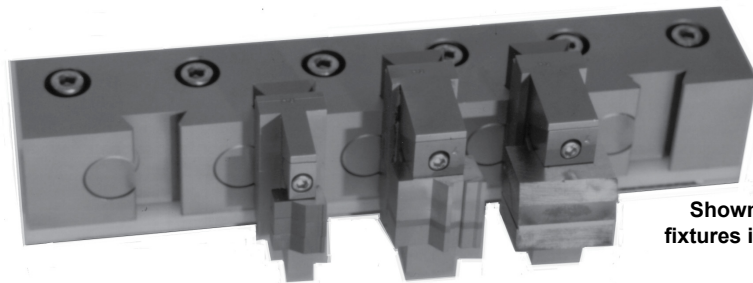


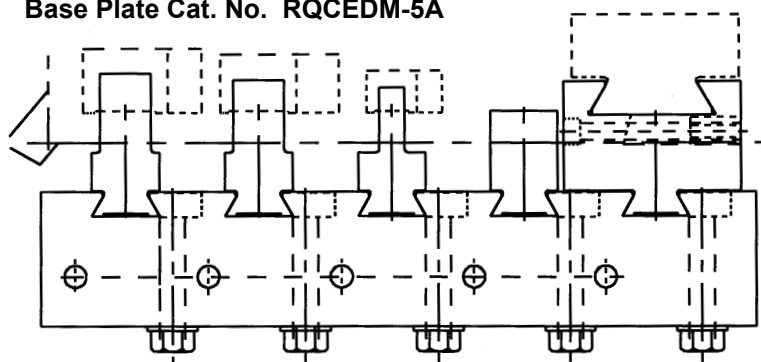
### BASE PLATE AND FIXTURES FOR WIRE EDM MACHINES ALLOWS FOR MULTIPLE EDMing OF INSERTS AND CONVENTIONAL DOVETAIL TOOLS



Shown with  
fixtures installed

- HOLDS ANY FIVE FIXTURES FOR UNATTENDED OPERATION.
- EDM FIXTURES ARE DOVETAIL MOUNTED AT ACCURATE CENTER TO CENTER LOCATION TO FACILITATE PROGRAMMING.
- MADE OF HEAT TREATED STAINLESS STEEL.
- MACHINE MOUNTING HOLES LOCATED TO SUIT YOUR EDM MACHINE.

Base Plate Cat. No. RQCEDM-5A



#### WIRE EDM BASE PLATE FIXTURES FOR RI AND TA SOMMA INSERTS

CATALOG NO. (INSERT WIDTHS)	NUMBER OF INSERTS	RQC TYPE	INCLUDED ANGLE
<b>RQCWF-3/8</b> (1.250 TO 2.750)	3 - 3/8" THICK or 3 + 1 SPACER	SHARPENABLE	17°
	8-1/8" THICK or 6 + 1 BACKUP	THROW-AWAY	
<b>RQCWF00-5/16</b> (.375 TO 1.750)	3 - 5/16" THICK or 3 + 1 SPACER	SHARPENABLE	17°
	8-1/8" THICK or 6 + 1 BACKUP	THROW-AWAY	
<b>RQCWFDS-2.5-3/8</b> (1.125)	3 - 3/8" THICK or 3 + 1 SPACER	SHARPENABLE	2-1/2°
	8-1/8" THICK or 6 + 1 BACKUP	THROW-AWAY	
<b>RQCWFDS-0-3/8</b> (1.750)	3 - 3/8" THICK or 3 + 1 SPACER	SHARPENABLE	0°
	8-1/8" THICK or 6 + 1 BACKUP	THROW-AWAY	

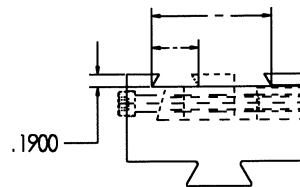
#### WIRE EDM BASE PLATE FIXTURES FOR STAI SOMMA INSERTS

Note maximum stacked capacity = 1-1/4" (10 Inserts)

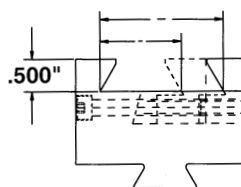
CATALOG PART NUMBER	INSERT FRONT CLEARANCE ANGLE	INSERT TOP RAKE ANGLE
<b>STA-EDM-DT-10</b>	10°	0°
<b>STA-EDM-DT-15</b>	10°	5°
<b>STA-EDM-DT-12</b>	12°	0°
<b>STA-EDM-DT-17</b>	12°	5°

- Made of heat treated stainless steel
- Supplied with clamps for inserts and backup spacers
- Locates on recess in back side of insert for EDMing of all four sides
- Reversible for left hand cut

Cat. No. EDM-DT-S  
ADJUSTABLE EDM  
BASE PLATE FIXTURE FOR  
.951" D/T FORM TOOLS AND  
.714" TO 1.787" D/T SHAVE TOOLS



Cat. No. EDM-DT-F  
ADJUSTABLE EDM  
BASE PLATE FIXTURE FOR  
DOVETAIL FORM TOOLS  
FROM 1.250" TO 1.897"



Cat. No. EDM-DT-V  
ADJUSTABLE EDM  
BASE PLATE VISE FIXTURE FOR  
1/4" TO 1-1/2"

