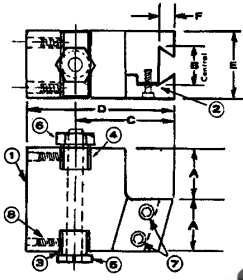


BROWN & SHARPE UNIVERSAL DOVETAIL TOOL HOLDERS



- Designed for use on front or rear slide for either forward or reverse spindle rotation.
- Especially suited for heavy cuts or for where design limitations of circular type tools do not permit grinding of side clearances.
- Swivel adjustment provided to correct for tapers.

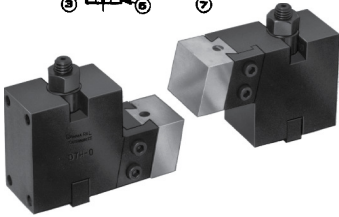


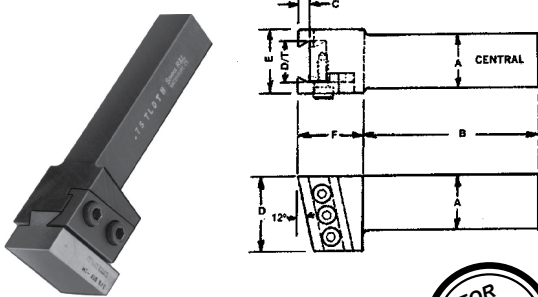
Photo shows tool holder as it is used for forward rotation on front and rear slide.

| MACH SIZE | D/T BLANK SEE PG 34 | ORDERING# | A | B | C | D | E | F |
|-----------|---------------------|------------|--------|-------|---------|---------|-------|-------|
| #00 | DTH00-.. | DTH00 | 1" | .714 | 1-5/8 | 2-5/8 | 1-1/4 | 3/16 |
| #00 | 5/8DTF-.. | DTH00-951 | 1" | .951 | 1-11/16 | 2-11/16 | 1-1/2 | 1/4 |
| #0 | DTH0-.. | DTH0 | 1-5/16 | .951 | 2-1/8 | 3-3/8 | 1-1/2 | 1/4 |
| #2 | DTH2-.. | DTH2 | 1-7/16 | 1.250 | 2-17/32 | 3-15/16 | 2" | 13/32 |
| #2 | 5/8DTF-.. | DTH2-951 | 1-7/16 | .951 | 2-7/8 | 4-9/32 | 1-1/2 | 1/4 |
| #2 | 1-1/4DTF-.. | DTH2-1.882 | 1-7/16 | 1.882 | 2-17/32 | 3-15/16 | 3" | 1/2 |

FORM & SHAVE

DOVETAIL FORM TOOL ADAPTER FOR TURRET LATHES AND CNC LATHES

These Holders are designed to hold standard Dovetail Blanks in the flat tool post or square tool post of all Turret Lathes and CNC Lathes.



| CAT. NO. | A | B | D/T | C | D | E | F |
|------------|-----------|-------|-------|-------|-------|-------|-------|
| .75TLDTH | 3/4 SQ. | 3-1/2 | .6995 | 1/4 | 1-1/4 | 1-1/4 | 1-1/4 |
| 1.0TLDTH | 1" SQ. | 4" | .951 | 1/4 | 1-3/4 | 1-1/2 | 1-1/2 |
| 1.25TLDTH | 1-1/4 SQ. | 4-1/2 | .951 | 1/4 | 1-3/4 | 1-1/2 | 1-1/2 |
| 1.882TLDTH | 1-1/4 SQ. | 4-1/2 | 1.882 | 17/32 | 2" | 3" | 2" |

DOVETAIL FORM TOOL ADAPTER PARTS

| Part No. | .75TLDTH Cat. No. | 1.0TLDTH Cat. No. | 1.25TLDTH Cat. No. | 1.882TLDTH Cat. No. |
|---------------|-------------------|-------------------|--------------------|---------------------|
| 1. Body | .75TLDTH-1 | 1.0TLDTH-1 | 1.25TLDTH-1 | 1.882TLDTH-1 |
| 2. Clamp | .75TLDTH-2 | 1.0TLDTH-2 | 1.0TLDTH-2 | 1.882TLDTH-2 |
| 3. Clamp Scr. | DTH2-7 | DTH2-7 | 1.25TLDTH-3 | 1.25TLDTH-3 |

See page 34 for Standard Dovetail Blanks to fit these holders.

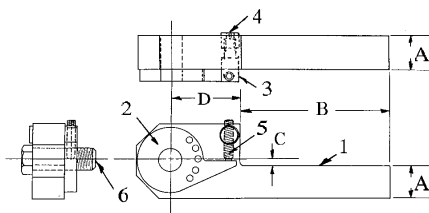
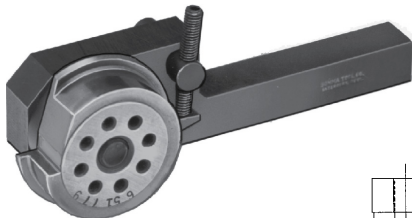


CIRCULAR FORM TOOL ADAPTER FOR TURRET LATHES AND CNC LATHES

These Holders are designed to hold standard Brown & Sharpe type Circular Form Tools in the flat form tool post or square tool post of all Turret Lathes and CNC Lathes.

The Circular Tool is mounted in the adapter so that the cutting edge of the tool is in line with the top side of the shank. The tool can be rotated to center with the combination of the adjustable sector plate and circular tools with pinholes.

| CAT. NO. | A | B | BLANK SIZE | THD. SIZE | C OFFSET | D | PINHOLE |
|----------|-----------|-------|------------|-----------|----------|--------|--|
| .50TLCF | 1/2 SQ. | 2-5/8 | #00 | 3/8-16 | 1/8 | 1-3/8 | 1/8 DIA. .787 BC 5/32 DIA. 1-1/16 |
| .75TLCF | 3/4 SQ. | 3-1/2 | #0 | 1/2-13 | 5/32 | 1-9/16 | 3/16 DIA. 1-3/8 BC |
| 1.0TLCF | 1" SQ. | 4" | #2 | 5/8-11 | 1/4 | 2" | 3/16 DIA. 1-1/2 BC |
| 1.25TLCF | 1-1/4 SQ. | 4-1/2 | #2 | 5/8-11 | 1/4 | 2" | 3/16 DIA. 1-1/2 BC |



CIRCULAR FORM TOOL ADAPTER PARTS

| Part No. | .50TLCF Cat. No. | .75TLCF Cat. No. | 1.0TLCF Cat. No. | 1.25TLCF Cat. No. |
|-----------------|------------------|------------------|------------------|-------------------|
| 1. Body | .50TLCF-1 | .75TLCF-1 | 1.0TLCF-1 | 1.25TLCF-1 |
| 2. Sector Plate | .50TLCF-2 | .75TLCF-2 | 1.0TLCF-2 | 1.25TLCF-2 |
| 3. Adj. Stud | .50TLCF-3 | .50TLCF-3 | 1.0TLCF-3 | 1.25TLCF-3 |
| 4. Adj. Nut | TH000-14 | TH000-14 | TH00-14 | TH00-14 |
| 5. Adj. Screws | OCD2-15 | OCD2-15 | OCD2-15 | OCD2-15 |
| 6. Tool Bolt | 00TB-1 | 0TB2-3 | 2TB2-1 | 2TB2-1 |
| 7. Spacer | .50TLCF-7 | — | — | — |

See page 41 for Standard Circular Form Tools and Blanks to fit these holders.