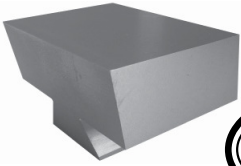
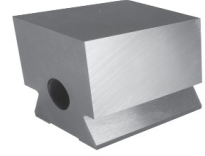
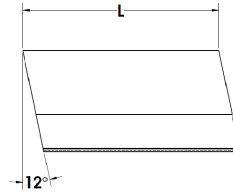
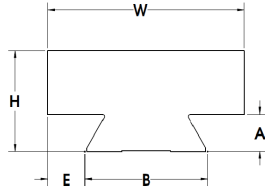


Semi-standard blanks to your specifications in any material or quantity quoted upon request. Send for a supply of blank order forms.
H.S.S. DOVETAIL FORM TOOL BLANKS HARDENED AND GROUND ALSO AVAILABLE SOFT - PRICES ON REQUEST



**ASK FOR QUANTITY
DISCOUNT PRICES FOR
GREATER SAVINGS**



FORM & SHAVE

Fits Dovetail Form Tool Holder	Dimensions						M-2 HSS Cat. No.	M-42 HSS Cat. No.	T15PM HSS Cat. No.	76PM HSS Cat. No.	FOR CARBIDE TIPPING	
	B	H	W	E	L	A					SOFT & GROUND ALLOY TOOL STEEL Cat. No.	HARDENED 4140 STEEL R/C 35-45 & GROUND Cat. No.
	+ .003 - .003	+ .015 - .002	+ .015 - .002	+ .015 - .000	+ .030 - .030	+ .015 - .000						
3/8"	.700	3/4"	1"	1/4"	1-1/2"	19/64"	3/8DTF-1	3/8DTF-1H	3/8DTF-1P	3/8DTF-1A	3/8DTF-1-SG	3/8DTF-1-HG
5/8"	.951	1"	1"	1/16"	2-1/4"	19/64"	5/8DTF-1	5/8DTF-1H	5/8DTF-1P	5/8DTF-1A	5/8DTF-1-SG	5/8DTF-1-HG
5/8"	.951	1"	1-1/4"	5/16"	2-1/4"	19/64"	5/8DTF-1-2	5/8DTF-1-2H	5/8DTF-1-2P	5/8DTF-1-2A	5/8DTF-1-2-SG	5/8DTF-1-2-HG
5/8"	.951	1"	1-1/2"	9/16"	2-1/4"	19/64"	5/8DTF-2	5/8DTF-2H	5/8DTF-2P	5/8DTF-2A	5/8DTF-2-SG	5/8DTF-2-HG
5/8"	.951	1"	1-1/2"	0	2-1/4"	19/64"	5/8DTF-2-0	5/8DTF-2-0H	5/8DTF-2-0P	5/8DTF-2-0A	5/8DTF-2-0-SG	5/8DTF-2-0-HG
5/8"	.951	1"	1-3/4"	9/16"	2-1/4"	19/64"	5/8DTF-2-2	5/8DTF-2-2H	5/8DTF-2-2P	5/8DTF-2-2A	5/8DTF-2-2-SG	5/8DTF-2-2-HG
5/8"	.951	1"	2"	17/32"	2-1/4"	19/64"	5/8DTF-3	5/8DTF-3H	5/8DTF-3P	5/8DTF-3A	5/8DTF-3-SG	5/8DTF-3-HG
5/8"	.951	1"	2-1/2"	3/4"	2-1/4"	19/64"	5/8DTF-4	5/8DTF-4H	5/8DTF-4P	5/8DTF-4A	5/8DTF-4-SG	5/8DTF-4-HG
5/8"	.951	1-1/2"	1"	1/16"	2-1/4"	19/64"	5/8DTF-5	5/8DTF-5H	5/8DTF-5P	5/8DTF-5A	5/8DTF-5-SG	5/8DTF-5-HG
5/8"	.951	1-1/2"	1-1/4"	5/16"	2-1/4"	19/64"	5/8DTF-6	5/8DTF-6H	5/8DTF-6P	5/8DTF-6A	5/8DTF-6-SG	5/8DTF-6-HG
5/8"	.951	1-1/2"	1-1/2"	9/16"	2-1/4"	19/64"	5/8DTF-7	5/8DTF-7H	5/8DTF-7P	5/8DTF-7A	5/8DTF-7-SG	5/8DTF-7-HG
5/8"	.951	1-1/2"	1-1/2"	0	2-1/4"	19/64"	5/8DTF-7-0	5/8DTF-7-0H	5/8DTF-7-0P	5/8DTF-7-0A	5/8DTF-7-0-SG	5/8DTF-7-0-HG
5/8"	.951	1-1/2"	1-3/4"	9/16"	2-1/4"	19/64"	5/8DTF-8	5/8DTF-8H	5/8DTF-8P	5/8DTF-8A	5/8DTF-8-SG	5/8DTF-8-HG
5/8"	.951	1-1/2"	2"	9/16"	2-1/4"	19/64"	5/8DTF-9	5/8DTF-9H	5/8DTF-9P	5/8DTF-9A	5/8DTF-9-SG	5/8DTF-9-HG
5/8"	.951	1-1/2"	2-1/2"	3/4"	2-1/4"	19/64"	5/8DTF-10	5/8DTF-10H	5/8DTF-10P	5/8DTF-10A	5/8DTF-10-SG	5/8DTF-10-HG
1"	1.614	1-1/2"	2"	3/16"	3"	35/64"	1DTF-1	1DTF-1H	1DTF-1P	1DTF-1A	1DTF-1-SG	1DTF-1-HG
1"	1.614	1-1/2"	2-1/2"	7/16"	3"	35/64"	1DTF-2	1DTF-2H	1DTF-2P	1DTF-2A	1DTF-2-SG	1DTF-2-HG
1"	1.614	1-1/2"	3"	11/16"	3"	35/64"	1DTF-3	1DTF-3H	1DTF-3P	1DTF-3A	1DTF-3-SG	1DTF-3-HG
1-1/4"	1.882	1-1/2"	2"	1/8"	3"	35/64"	1-1/4DTF-1	1-1/4DTF-1H	1-1/4DTF-1P	1-1/4DTF-1A	1-1/4DTF-1-SG	1-1/4DTF-1-HG
1-1/4"	1.882	1-1/2"	2-1/2"	9/16"	3"	35/64"	1-1/4DTF-2	1-1/4DTF-2H	1-1/4DTF-2P	1-1/4DTF-2A	1-1/4DTF-2-SG	1-1/4DTF-2-HG
1-1/4"	1.882	1-1/2"	2-1/2"	0	3"	35/64"	1-1/4DTF-2-0	1-1/4DTF-2-0H	1-1/4DTF-2-0P	1-1/4DTF-2-0A	1-1/4DTF-2-0-SG	1-1/4DTF-2-0-HG
1-1/4"	1.882	1-1/2"	3"	9/16"	3"	35/64"	1-1/4DTF-3	1-1/4DTF-3H	1-1/4DTF-3P	1-1/4DTF-3A	1-1/4DTF-3-SG	1-1/4DTF-3-HG
1-1/4"	1.882	1-1/2"	2"	1/8"	2-1/4"	35/64"	1-1/4DTF-4	1-1/4DTF-4H	1-1/4DTF-4P	1-1/4DTF-4A	1-1/4DTF-4-SG	1-1/4DTF-4-HG
1-1/4"	1.882	1-1/2"	2-1/2"	9/16"	2-1/4"	35/64"	1-1/4DTF-5	1-1/4DTF-5H	1-1/4DTF-5P	1-1/4DTF-5A	1-1/4DTF-5-SG	1-1/4DTF-5-HG
1-1/4"	1.882	1-1/2"	2-1/2"	0	2-1/4"	35/64"	1-1/4DTF-5-0	1-1/4DTF-5-0H	1-1/4DTF-5-0P	1-1/4DTF-5-0A	1-1/4DTF-5-0-SG	1-1/4DTF-5-0-HG
1-1/4"	1.882	1-1/2"	3"	9/16"	2-1/4"	35/64"	1-1/4DTF-6	1-1/4DTF-6H	1-1/4DTF-6P	1-1/4DTF-6A	1-1/4DTF-6-SG	1-1/4DTF-6-HG
1-1/4"	1.882	1-1/2"	3"	0	2-1/4"	35/64"	1-1/4DTF-6-0	1-1/4DTF-6-0H	1-1/4DTF-6-0P	1-1/4DTF-6-0A	1-1/4DTF-6-0-SG	1-1/4DTF-6-0-HG
1-1/4"	1.882	2"	2"	1/8"	3"	35/64"	1-1/4DTF-8	1-1/4DTF-8H	1-1/4DTF-8P	1-1/4DTF-8A	1-1/4DTF-8-SG	1-1/4DTF-8-HG
1-1/4"	1.882	2"	2-1/2"	5/8"	3"	35/64"	1-1/4DTF-9	1-1/4DTF-9H	1-1/4DTF-9P	1-1/4DTF-9A	1-1/4DTF-9-SG	1-1/4DTF-9-HG
1-1/4"	1.882	2"	2-1/2"	0	3"	35/64"	1-1/4DTF-9-0	1-1/4DTF-9-0H	1-1/4DTF-9-0P	1-1/4DTF-9-0A	1-1/4DTF-9-0-SG	1-1/4DTF-9-0-HG
1-1/4"	1.882	2"	3"	5/8"	3"	35/64"	1-1/4DTF-10	1-1/4DTF-10H	1-1/4DTF-10P	1-1/4DTF-10A	1-1/4DTF-10-SG	1-1/4DTF-10-HG
1-1/4"	1.882	2"	2"	1/8"	2-1/4"	35/64"	1-1/4DTF-11	1-1/4DTF-11H	1-1/4DTF-11P	1-1/4DTF-11A	1-1/4DTF-11-SG	1-1/4DTF-11-HG
1-1/4"	1.882	2"	2-1/2"	5/8"	2-1/4"	35/64"	1-1/4DTF-12	1-1/4DTF-12H	1-1/4DTF-12P	1-1/4DTF-12A	1-1/4DTF-12-SG	1-1/4DTF-12-HG
1-1/4"	1.882	2"	2-1/2"	0	2-1/4"	35/64"	1-1/4DTF-12-0	1-1/4DTF-12-0H	1-1/4DTF-12-0P	1-1/4DTF-12-0A	1-1/4DTF-12-0-SG	1-1/4DTF-12-0-HG
1-1/4"	1.882	2"	3"	5/8"	2-1/4"	35/64"	1-1/4DTF-13	1-1/4DTF-13H	1-1/4DTF-13P	1-1/4DTF-13A	1-1/4DTF-13-SG	1-1/4DTF-13-HG
1-5/8"	2.238	1-1/2"	3"	3/8"	3"	35/64"	1-5/8DTF-1	1-5/8DTF-1H	1-5/8DTF-1P	1-5/8DTF-1A	1-5/8DTF-1-SG	1-5/8DTF-1-HG
2-1/8"	2.883	1-1/2"	3"	1/8"	3"	43/64"	2-1/8DTF-1	2-1/8DTF-1H	2-1/8DTF-1P	2-1/8DTF-1A	2-1/8DTF-1-SG	2-1/8DTF-1-HG
DAVENPORT*	.951	1"	1"	1/16"	1-1/2"	19/64"	DAV-DTF-1	DAV-DTF-1H	DAV-DTF-1P	DAV-DTF-1A	DAV-DTF-1-SG	DAV-DTF-1-HG
	.951	1"	1-1/4"	19/64"	1-1/2"	19/64"	DAV-DTF-2	DAV-DTF-2H	DAV-DTF-2P	DAV-DTF-2A	DAV-DTF-2-SG	DAV-DTF-2-HG
	.951	1"	1-1/2"	19/64"	1-1/2"	19/64"	DAV-DTF	DAV-DTF-H	DAV-DTF-P	DAV-DTF-A	DAV-DTF-SG	DAV-DTF-HG
	.951	1"	1-1/2"	9/16"	1-1/2"	19/64"	DAV-DTF-3	DAV-DTF-3H	DAV-DTF-3P	DAV-DTF-3A	DAV-DTF-3-SG	DAV-DTF-3-HG
NEW BRITAIN GRIDLEY	1.253	1-1/2"	1-1/2"	1/4"	2"	9/16"	NBDTF-1	NBDTF-1H	NBDTF-1P	NBDTF-1A	NBDTF-1-SG	NBDTF-1-HG
	1.253	1-1/2"	2"	3/8"	2"	9/16"	NBDTF-2	NBDTF-2H	NBDTF-2P	NBDTF-2A	NBDTF-2-SG	NBDTF-2-HG
	1.253	1-1/2"	2-1/2"	5/8"	2"	9/16"	NBDTF-3	NBDTF-3H	NBDTF-3P	NBDTF-3A	NBDTF-3-SG	NBDTF-3-HG
	1.253	1-1/2"	3"	7/8"	2"	9/16"	NBDTF-4	NBDTF-4H	NBDTF-4P	NBDTF-4A	NBDTF-4-SG	NBDTF-4-HG
DTH00	.714	3/4"	1-1/4"	17/64"	1"	13/64"	DTH00-9	DTH00-9H	DTH00-9P	DTH00-9A	DTH00-9-SG	DTH00-9-HG
DTH0	.951	1"	1-1/2"	9/32"	1-5/16"	19/64"	DTH0-9	DTH0-9H	DTH0-9P	DTH0-9A	DTH0-9-SG	DTH0-9-HG
DTH2	1.250	1-1/2"	2"	3/8"	1-7/16"	7/16"	DTH2-9	DTH2-9H	DTH2-9P	DTH2-9A	DTH2-9-SG	DTH2-9-HG

Note: Davenport form tool blanks have a 1/4-28 tapped hole, DTH series also have tapped holes