

DAVENPORT FORM TOOL BLANKS

also used on the 7/16" National Acme
and the 9/16" Conomatic.



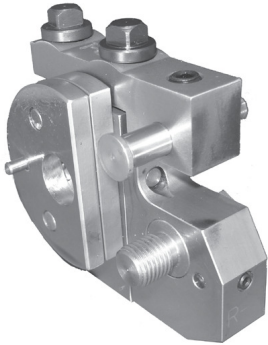
2" Diameter
9/16" Center Hole,
(6) 9/64 Dia. Pin Holes
Thru On 1-1/4 B.C.
Hardened and surface
ground both sides O.D. turned only.

* F L A N G E

WIDTH		M2 H.S.S.	M42 H.S.S.	T15PM H.S.S.	76PM H.S.S.
A	B	CAT. NO.	CAT. NO.	CAT. NO.	CAT. NO.
1/8	1/4	DFLH4	DFLH4H	DFLH4P	DFLH4A
3/16	1/4	DFLH6	DFLH6H	DFLH6P	DFLH6A
1/4		DFH8	DFH8H	DFH8P	DFH8A
5/16		DFH10	DFH10H	DFH10P	DFH10A
3/8		DFH12	DFH12H	DFH12P	DFH12A
7/16		DFH14	DFH14H	DFH14P	DFH14A
1/2		DFH16	DFH16H	DFH16P	DFH16A
9/16		DFH18	DFH18H	DFH18P	DFH18A
5/8		DFH20	DFH20H	DFH20P	DFH20A
3/4		DFH24	DFH24H	DFH24P	DFH24A
7/8		DFH28	DFH28H	DFH28P	DFH28A
1"		DFH32	DFH32H	DFH32P	DFH32A
1-1/8		DFH36	DFH36H	DFH36P	DFH36A
1-1/4		DFH40	DFH40H	DFH40P	DFH40A
1-3/8		DFH44	DFH44H	DFH44P	DFH44A
1-1/2		DFH48	DFH48H	DFH48P	DFH48A
1-5/8		DFH52	DFH52H	DFH52P	DFH52A
1-3/4		DFH56	DFH56H	DFH56P	DFH56A
1-7/8		DFH60	DFH60H	DFH60P	DFH60A
2"		DFH64	DFH64H	DFH64P	DFH64A

SIZING TOOL HOLDER FOR DAVENPORT

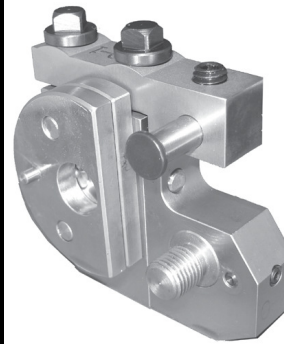
075" to .500" Diameter x 3/4" Wide



Cat. No.
2726-R-SA-SOMMA

SIZING TOOL HOLDER (OVERSIZE) FOR DAVENPORT

.262" to .812" Diameter x 3/4" Wide



Cat. No.
2726-O-SA-SOMMA

DAVENPORT SIZE TOOL BLANKS



1-5/16" Diameter
7/16-20 L.H. Thread
Hardened and surface
ground both sides O.D. turned only.

** NOTE: 1-1/2" WIDE BLANKS COUNTERBORED
.501 DIA X 1-1/16" DEEP

WIDTH	M2 H.S.S.	M42 H.S.S.	T15PM H.S.S.	76PM H.S.S.
	CAT. NO.	CAT. NO.	CAT. NO.	CAT. NO.
1/4	DSH8	DSH8H	DSH8P	DSH8A
5/16	DSH10	DSH10H	DSH10P	DSH10A
3/8	DSH12	DSH12H	DSH12P	DSH12A
7/16	DSH14	DSH14H	DSH14P	DSH14A
1/2	DSH16	DSH16H	DSH16P	DSH16A
9/16	DSH18	DSH18H	DSH18P	DSH18A
5/8	DSH20	DSH20H	DSH20P	DSH20A
3/4	DSH24	DSH24H	DSH24P	DSH24A
7/8	DSH28	DSH28H	DSH28P	DSH28A
1"	DSH32	DSH32H	DSH32P	DSH32A
1-1/8	DSH36	DSH36H	DSH36P	DSH36A
1-1/4	DSH40	DSH40H	DSH40P	DSH40A
1-3/8	DSH44	DSH44H	DSH44P	DSH44A
1-1/2**	DSH48	DSH48H	DSH48P	DSH48A

DAVENPORT ROLL BLANKS



Hardened 52100 steel
(RC/55) Surface ground both sides
O.D. rough ground only
15/16 O.D.
.3125/.313 HONED I.D.

WIDTH	CAT. NO.	WIDTH	CAT. NO.
1/4	DR8	9/16	DR18
5/16	DR10	5/8	DR20
3/8	DR12	3/4	DR24
7/16	DR14	7/8	DR28
1/2	DR16	1"	DR32