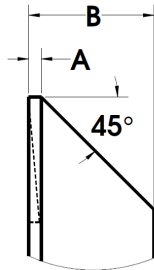


### 45 DEGREE FACE-OFF TOOLS FOR DAVENPORT MACHINES



45° FACE-OFF TOOLS are intended for facing the end of the bar, necking, or forming large 45° chamfers.

A	B	M2 PART#	T15PM PART#	3-LIP C2 CARB. TIPPED PART#
1/16"	1/4"	DF45-1	DF45-1V	DF45-1CT
3/32"	5/16"	DF45-2	DF45-2V	DF45-2CT



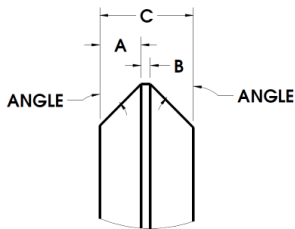
### CIRCULAR DOUBLE CHAMFER TOOLS FOR DAVENPORT MACHINES



Double chamfer tools are designed for chamfering the back end of the completed part and the front end of the following part prior to cutting off in between.

45° chamfer tools are available with the flat in the center or offset which has the flat closer to the spindle side of the tool to allow working close to the spindle.

30° chamfer tools have the flat in the center of the tool.



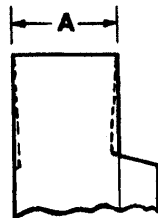
ANGLE	A	B	C	M2 PART#	T15PM PART#	3-LIP C2 CARB. TIPPED PART#	SOLID C2 CARBIDE PART#
30 DEG.	7/64	.025	1/4"	D30C1	D30C1V	D30C1-CT	
45 DEG.	3/32	.060	5/16"			D45C1-CT	
45 DEG.	7/64	.025	1/4"	D45C1	D45C1V	D45C2-1-CT	D45C1-SC
45 DEG.	1/8"	.090	3/8"			D45C2-CT	



FORM & SHAPE

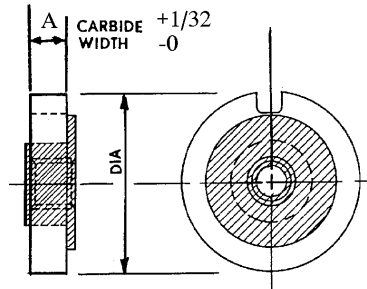
### CIRCULAR STRAIGHT TOOLS FOR DAVENPORT MACHINES

- For forming grooves, shoulders or roughing down the work piece
- Supplied with side pinholes
- Side clearance ground



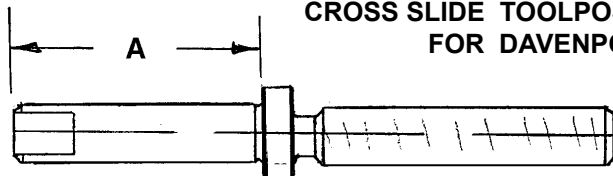
WIDTH A	M2 PART#	T15PM PART#	3-LIP C2 CARB. TIPPED PART#	SOLID C2 CARBIDE PART#
1/8"	DS4	DS4V	DS4-CT	DS4-SC
3/16"	DS6	DS6V	DS6-CT	DS6-SC
1/4"	DS8	DS8V	DS8-CT	DS8-SC
5/16"	DS10	DS10V	DS10-CT	DS10-SC
3/8"	DS12	DS12V	DS12-CT	DS12-SC
7/16"	DS14	DS14V	DS14-CT	
1/2"	DS16	DS16V	DS16-CT	DS16-SC
9/16"	DS18	DS18V	DS18-CT	
5/8"	DS20	DS20V	DS20-CT	

### SOLID CARBIDE UNGROUND CIRCULAR FORM TOOL BLANKS FOR DAVENPORT MACHINES



WIDTH	PART#
1/8"	DSCB-4
3/16"	DSCB-6
1/4"	DSCB-8
5/16"	DSCB-10
3/8"	DSCB-12
1/2"	DSCB-16

### CROSS SLIDE TOOLPOST ADJUSTING SCREWS FOR DAVENPORT MACHINES



CAT. NO.	"A"
STC-DV-SCR-1.25	1-1/4
STC-DV-SCR-1.62	1-5/8