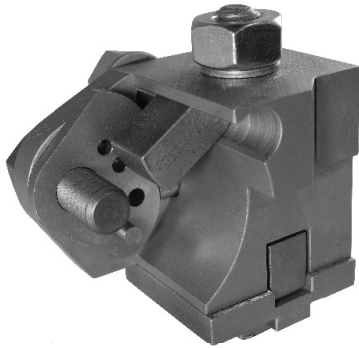


CIRCULAR FORM TOOL HOLDER FOR B&S MACHINES



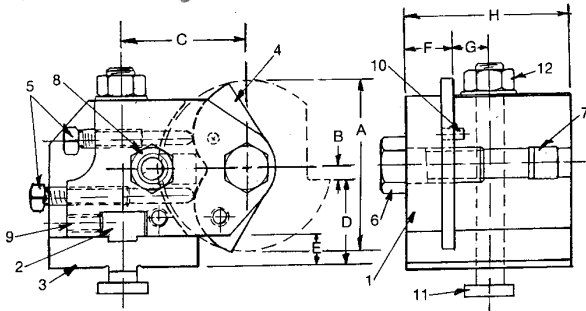
- Supplied with riser block for right or left-hand operation
- Pinhole sector plate prevents tool slippage
- Swivel adjustment to correct part tapers
- Adjusting screws for fine adjustment to center
- 2 tapped holes on side to fit attachments
- Supplied with 3 hook bolts for various tool widths as shown below.

CIRCULAR TOOL POST - SPECIFICATIONS

CAT. NO.	FITS	A	B	C	D	E	F	G	H
CTP00-F	#00 B&S FRONT	1-3/4	1/8	1-5/16	1"	1/4	7/16	3/8	1-11/16
CTP00-B	#00 B&S BACK	1-3/4	1/8	1-5/16	1"	1/4	7/16	3/8	1-11/16
CTP0-F	#0 B&S FRONT	2-1/4	5/32	1-3/4	1-5/16	5/16	19/32	13/32	2"
CTP0-B	#0 B&S BACK	2-1/4	5/32	1-3/4	1-5/16	5/16	19/32	13/32	2"
CTP2-F	#2 B&S FRONT	3"	1/4	2-5/32	1-7/16	1/2	13/16	11/16	2-7/8
CTP2-B	#2 B&S BACK	3"	1/4	2-5/32	1-7/16	1/2	13/16	11/16	2-7/8

CIRCULAR TOOL POST - PARTS

Part No.	CTP00 Cat. No.	CTP0 Cat. No.	CTP2 Cat. No.
1F. Body-Fr. Slide	CTP00-F-1	CTP0-F-1	CTP2-F-1
1B. Body Bk. Slide	CTP00-B-1	CTP0-B-1	CTP2-B-1
2. Alignment Plate	DTH00-3	DTH0-3	CTP2-2
3. Riser Block	CTP00-3	CTP0-3	CTP2-3
4. Sector Plate	CTP00-4	CTP0-4	CTP2-4
5. Adj. Screws	CTP00-5	CTP0-5	CTP0-5
5. Adj. Screws, long	—	—	CTP2-5
6. Tool Bolt	00TB-1	0TB2-3	2TB2-1
7. Hook Bolts (3)	(See Listing This Page)		
8. Hook Nut & Washer	CTP00-8	CTP0-8	CTP2-8
9. Alignment Screw	0RB2-5	CTP0-9	2ANR-6
10. Sector Pin	CTP00-10	CTP2-10	CTP2-10
11. T Bolt	00TPB-3	0TPB-4	2TPB-4
12. T. Nut & Washer	00TBN	0TBN	2TBN



See page 41 for Standard Circular Form Tools and Blanks to fit these holders.

FORM & SHAPE

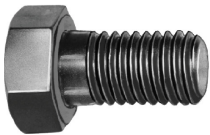
HOOK BOLTS FOR B&S MACHINES

- Alloy Steel
- Heat Treated For Longer Life
- Available in 3 Lengths for #00 + #0, 4 lengths for #2 Machine To Accommodate All Tool Widths
- Fit All Standard Circular Tool Posts



PART. NO.	FITS	LENGTH UNDER HOOK
CTP00-7S	#00 B&S	1-1/8
CTP00-7M	#00 B&S	1-7/16
CTP00-7L	#00 B&S	1-3/4
CTP0-7S	#0 B&S	1-3/8
CTP0-7M	#0 B&S	1-3/4
CTP0-7L	#0 B&S	2-1/8
CTP2-7S	#2 B&S	1-15/16
CTP2-7M	#2 B&S	2-7/16
CTP2-7L	#2 B&S	2-11/16
CTP2-7XL	#2 B&S	3-7/16

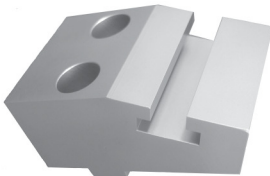
TOOL BOLTS FOR CIRCULAR FORM TOOLS



Made of heat-treated alloy steel. These tool bolts will hold securely and squarely.

CAT. NO.	THD.	LENGTH	CAT. NO.	THD.	LENGTH
00TB-1	3/8-16	1"	0TB-1	1/2-14	1"
0TB1-3	1/2-13	1"	0TB-2	1/2-14	1-1/2
0TB2-3	1/2-13	1-1/2	2TB-1	5/8-12	1-1/8
2TB1-1	5/8-11	1-1/8	2TB-2	5/8-12	1-5/8
2TB2-1	5/8-11	1-5/8			

CIRCULAR TOOL HOLDER ADAPTER BLOCK FOR B&S MACHINES (#2 TO #00)



Save money by mounting your #00 B&S circular form tool holder on a #2 B&S machine.

Cat. No.
CTP00/2