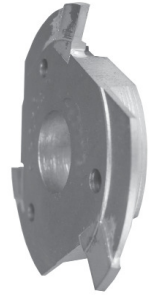


CIRCULAR PLAIN CUT-OFF TOOLS FOR DAVENPORT MACHINES (CAN ALSO BE USED ON 7/16" ACME AND 9/16" CONE MACHINES)

A	B	M2 PART#	T15PM PART#	3-LIP C2 CARB. TIPPED PART#	SOLID C2 CARBIDE PART#
.030	3/32	DP030	DP030V	DP030-CT	
.040	1/8	DP040	DP040V	DP040-CT	
.050	3/16	DP050	DP050V	DP050-CT	DP050-SC
.060	7/32	DP060	DP060V	DP060-CT	
.070	1/4	DP070	DP070V	DP070-CT	DP070-SC
.080	9/32	DP080	DP080V	DP080-CT	
.090	9/32	DP090	DP090V	DP090-CT	DP090-SC



- For straight cutting-off
- Side clearance ground
- All with side pinholes
- Available with 23 degree C/O angle for non-ferrous metals
- Available with TIN and other coatings

"T" CUT-OFF BLADE HOLDER FOR DAVENPORT

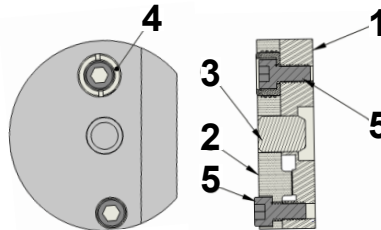
This Cut-Off Blade Holder can be mounted in the circular form tool position on the Davenport Machine and holds standard 1/2" high "T" Type Cut-Off Blades.

Cat. No.
TCOBH-DAV

EXCLUSIVE ADJUSTMENT FEATURE
MAKES COMPENSATION FOR
DIFFERENT BLADE WIDTHS FAST AND
EASY

- * ELIMINATES NEED FOR WASHERS OR SPACERS
- * HOLDS BLADES MORE SECURELY
- * HOLDER LASTS LONGER

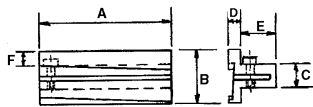
(FOR STANDARD BLADES TO FIT THIS HOLDER SEE PAGES 48 & 49).



Part No.	Cat. No.
1. Body	TCOBH-DAV-1
2. Clamp	TCOBH-DAV-2
3. Adjustment Screw	TCOBH-DAV-3
4. Center Stud	TCOBH-DAV-4
5. Clamp Screws	ATTO-16

CUT-OFF BLADE HOLDERS

- Fits R & L Universal Tool Post
- Can also be used on turret lathe tool posts
- Forward rotation holder can be used on either front or rear side.
- Reverse rotation holder can be used on either front or rear side
- Entire holder can be removed for tool resharping without losing setting.
- TCOBH-ACCU is rectangular and does not have projection "C" and "E".



HOLDERS FOR T-TYPE BLADES

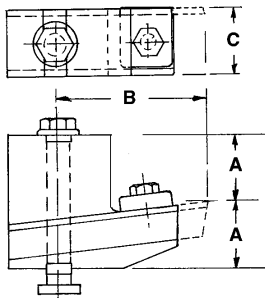
TOOL NO.	ROTATION	BLADE HEIGHT
TCOBH00-F	FORWARD	1/2
TCOBH00-R	REVERSE	1/2
TCOBH1-F	FORWARD	11/16
TCOBH1-R	REVERSE	11/16
TCOBH2-F	FORWARD	11/16
TCOBH2-R	REVERSE	11/16
TCOBH-ACCU	FORWARD	1/2

CUT-OFF BLADE HOLDER SPECIFICATIONS

Size	A	B	C	D	E	F
No. 00	2-1/2	1"	3/8	1/4	1/2	5/16
No. 1	2-3/4	1-1/8	1/2	1/4	3/4	9/32
No. 2	3"	1-3/16	5/8	5/16	1"	5/16
ACCU	3-1/2	63/64	0	9/16	0	1/4

(FOR STANDARD CUT-OFF BLADES TO FIT THESE HOLDERS SEE PAGES 48 & 49.)

UNIVERSAL CUT-OFF BLADE TOOL POST FOR B&S MACHINES



UNIQUE DESIGN:

- ONE TOOL POST TAKES CARE OF ALL POSITIONS BY HOLDING BLADE ON ONE SIDE OR THE OTHER AND BY USING TOOL POST RIGHT SIDE UP OR UPSIDE DOWN
- CAN BE USED ON EITHER FRONT OR REAR SLIDE AND FOR FORWARD OR REVERSE ROTATION
- HOLDS "T" TYPE CUTOFF BLADES (SEE PAGES 48 & 49 FOR BLADES TO FIT THESE HOLDERS)
- RUGGED CONSTRUCTION
- REVERSIBLE CLAMP BLOCK HOLDS BLADE SECURELY ON EITHER SIDE

CAT. NO.	A	B	C	BLADE
BLTP-00	1"	2-3/16	1"	1/2
BLTP-0	1-5/16	2-3/4	1-1/4	11/16
BLTP-2	1-7/16	3-5/8	1-3/8	11/16

CUT OFF