

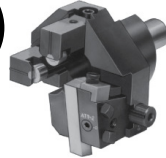
### ACCU-SET Roller Backrest Turning Tool

#### FEATURES

- All cutting tool slides are interchangeable.
- All cutting tool slides are adjustable to center to compensate for machine misalignment.
- Screw adjustment of roller backrest slides assure easy, positive setting.
- Extended roller blocks available-for supporting on stock O.D. (positioned ahead of the cutting tool)
- Available for left hand operation.
- Micrometer adjustment of cutting tool slide-each graduation = .004" (1MM) on diameter (easily set in between for .001 or less movement.)
- Available for left hand operation.

Shown in 3 styles below - See page 78 for improved Tangi-Square design!

**ATT STYLE**  
With H.S.S. Cutting Tool Slide



• Cuts tangentially.

**AVTT STYLE**  
With Triangular Carbide Insert Slide

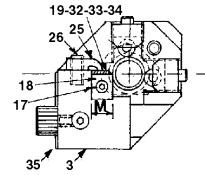
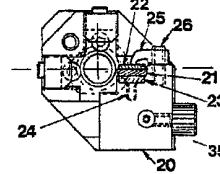
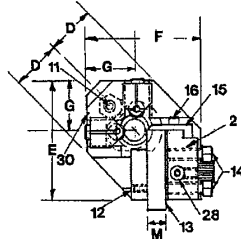
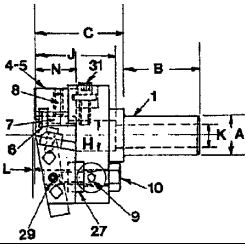


• Triangular carbide insert cuts radially.

**ACTT STYLE**  
With Rectangular Carbide Insert Slide



• Only available left hand, right hand tools have been replaced with TANGI-SQUARE ASTT style holder shown on Pg. 78.



Roller Turning Tool	Cat. No.	Cat. No.	Cat. No.
With H.S.S. Cutting Tool Slide	ATT00	ATT0	ATT2
With H.S.S. Cutting Tool Slide LH	ATT00-L	ATT0-L	ATT2-L
With Rectangular Carbide Insert Tool Slide LH	ACTT00-L	ACTT0-L	ACTT2-L
With Triangular Carbide Insert Tool Slide	AVTT00	AVTT0	AVTT2
With Triangular Carbide Insert Tool Slide LH	AVTT00-L	AVTT0-L	AVTT2-L
A	5/8	3/4	1"
B	1-9/32	1-1/2	1-15/16
C	1-17/32	2-3/16	3"
D	13/16	1-3/16	1-3/8
E	1-15/16	2-3/4	3-7/16
F	1-15/16	2-7/8	3-9/16
G	13/16	1-3/8	1-11/16
H	1/2	7/8	1-1/4
J	1-3/8	1-7/8	2-3/4
K	3/8	1/2	5/8
L	3/64	3/32	3/32
M	5/16	3/8	7/16
N	11/16	1-1/16	1-1/2
Turning Capacity	5/64 to 3/8 Dia. x Mach. Cap.	5/32 to 1/2 Dia. x Mach. Cap.	3/16 to 5/8 Dia. x Mach. Cap.
	25/64 to 1/2 Dia. x 1-3/8 Lg	33/64 to 7/8 Dia. x 1-7/8 Lg	41/64 to 1-1/4 Dia. x 2-3/4 Lg

Tool Slide Only Replacement	For ATT00 Cat. No.	For ATT0 Cat. No.	For ATT2 Cat. No.
Complete H.S.S. Cutting Tool Slide	ATT00-CTS	ATT0-CTS	ATT2-CTS
Complete H.S.S. Cutting Tool Slide LH	ATT00-CTS-L	ATT0-CTS-L	ATT2-CTS-L
Complete Rectangular Carbide Insert Slide	ATT00-RCS	ATT0-RCS	ATT2-RCS
Complete Rectangular Carbide Insert Slide LH	ATT00-RCS-L	ATT0-RCS-L	ATT2-RCS-L
Complete Triangular Carbide Insert Slide	ATT00-VCS	ATT0-VCS	ATT2-VCS
Complete Triangular Carbide Insert Slide LH	ATT00-VCS-L	ATT0-VCS-L	ATT2-VCS-L
Complete Roller Backrest Slide (Rolls on turned diameter)	ATT00-RBS	ATT0-RBS	ATT2-RBS
Complete Extended Roller Backrest Slide (Rolls on bar stock)	ATT00-ERB	ATT0-ERB	ATT2-ERB

Parts for Tool Numbers	ATT00 AVTT00 ACTT00-L AVTT00-L	ATT00-L AVTT0 ACTT0-L AVTT0-L	ATT2 AVTT2 ACTT2-L AVTT2-L
Part No.	Cat. No.	Cat. No.	Cat. No.
1. Body	ATT00-1	ATT0-1	ATT2-1
1. Body LH	ATT00-1L	ATT0-1L	ATT2-1L
2. H.S.S. Tool Slide	ATT00-2	ATT0-2	ATT2-2
2. H.S.S. Tool Slide LH	ATT00-2L	ATT0-2L	ATT2-2L
3. Rectangular Insert Tool Slide LH	ATT00-3L	ATT0-3L	ATT2-3L
4. Roller Block	ATT00-4	ATT0-4	ATT2-4
5. Extended Roller Block	ATT00-5	ATT0-5	ATT2-5
6. Roll	ATT00-6	ATT0-6	ATT2-6
7. Carbide Roll Pin	ATT00-7	ATT0-7	ATT2-7
8. Pin Screw	ATT00-8	ATT0-8	ATT2-8
9. Micrometer Screw	ATT00-9	ATT0-9	ATT2-9
10. H.S.S. Tool Slide Lock Screw	ATT00-10	ATT0-10	ATT2-10
11. Roller Slide Clamp Lock Screw	ATT00-10	ATT0-11	FDH4B-4-1
12. Rocker Screw	ATT00-12	TH000-3	1ANR-6
13. H.S.S. Cutting Tool	TT00-8	TT1-8	TT2-8
14. Tool Lock Screw	ATT00-14	ATT0-14	ATT2-14
15. H.S.S. Chip Breaker	ATT00-15	ATT0-15	ATT2-15
16. Chip Breaker Screw	ATT00-16	ATT0-16	TCOBH00-SCR
17. Rectangular Insert Screw	ATT00-17	ATT0-17	ATT2-17
18. Rectangular Inserts Grade C-2 Carbide	CIH00-5-C2	See Page 77 for Specifications	CIH2-5-C2
Grade C-7 Carbide	CIH00-5-C7	CIH1-5-C2	CIH2-5-C7
19. Rectangular Carbide Chip Breaker	ATT00-19	ATT00-19	ATT2-19
20. Triangular Insert Tool Slide	ATT00-20	ATT0-20	ATT2-20
20. Triangular Insert Tool Slide LH	ATT00-20L	ATT0-20L	ATT2-20L
21. Triangular Inserts Grade C-2 Carbide	ATT00-21-C2	ATT00-21-C2	ATT2-21-C2
Grade C-7 Carbide	ATT00-21-C7	ATT00-21-C7	ATT2-21-C7
22. Triangular Carbide Chip Breaker	ATT00-22	ATT00-22	ATT2-22
23. Triangular Anvil	ATT00-23	ATT00-23	ATT2-23
24. Triangular Anvil Screw	ATT00-24	ATT00-24	ATT2-24
25. Carbide Insert Clamp	ATT00-25	ATT00-25	ATT2-25
26. Carbide Insert Clamp Screw	ATT00-26	ATT00-26	ATT2-26
27. Slide Plate	ATT00-27	ATT0-27	ATT2-27
27. Slide Plate LH	ATT00-27L	ATT0-27L	ATT2-27L
28. Adjusting Stud	ATT00-28	ATT0-28	ATT2-28
29. Adj. Stud Lock Screw	ATT00-12	ATT00-12	1ANR-6
30. Roller Block Clamp	ATT00-30	ATT0-30	ATT2-30
31. Roller Block Adj. Screw	ATT00-31	ATT0-31	ATT2-31
32. Backup Plate & Screw	ATT00-32	ATT0-32	ATT2-32
33. Triangular Chip Breaker Adjuster	ATT00-33	ATT00-33	ATT00-33
34. Breaker Adj Screw	ATT00-34	ATT00-34	ATT00-34
35. Slide Clamp Screw	ATT00-35	ATT0-35	ATT00-12