

### COMPLETE ROLLER BACKRESTS

Roller backrests can be used advantageously for many support applications where carbide backrests are not satisfactory. Precision rollers and pins rotate freely and give sturdy support on even the heaviest cuts.



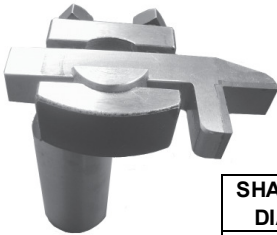
SHANK DIA	FITS	CAT. NO.	MIN. DIA. THAT CAN BE TURNED
1/2"	00	TT00-RBR	1/8"
3/4"	1	TT1-RBR	1/8"
1"	2	TT2-RBR	3/16"

#### ROLLER BACKREST PARTS

Size	TT00-RBR	TT1-RBR	TT2-RBR
Part No.	Cat. No.	Cat. No.	Cat. No.
1. Roller and Pin Sets*	TT00RBR-1	TT1RBR-1	TT2RBR-1
2. Roller Shank	TT00RBR-2	TT1RBR-2	TT2RBR-2
3. Roller Clamp	TT00RBR-3	TT1RBR-3	TT2RBR-3
4. Clamp Screw	TT00-5	TT1-5	TT2-5

\*Roller and pin sets consist of 2 rolls and 2 pins

### COMPLETE CARBIDE BACKRESTS



The extremely hard surface of the carbide backrests will not pick up metal or mar the surface of the work with scratches or blisters.

SHANK DIA	FITS	CAT. NO.	MIN. DIA. THAT CAN BE TURNED
1/2"	00	TT00-CBR	1/16"
3/4"	1	TT1-CBR	1/16"
1"	2	TT2-CBR	1/16"

The completed carbide backrest consists of the following assembly of parts as listed on page 82.

- |   |                             |   |                        |
|---|-----------------------------|---|------------------------|
| 1 | No. 4 Backrest holder       | 1 | No. 9 Carbide backrest |
| 2 | No. 7 Tool adjusting screws | 1 | No. 10 Rocker shoe     |

### COMPLETE ANGULAR CUTTER HOLDERS



SHANK DIA	FITS	CAT. NO.
1/2"	00	TT00-ACH
3/4"	1	TT1-ACH
1"	2	TT2-ACH

The complete angular cutter holder consists of the following assembly of parts as listed on page 82.

- |   |                             |   |                    |
|---|-----------------------------|---|--------------------|
| 1 | No. 3 Angular cutter holder | 1 | No. 8 Cutting tool |
| 2 | No. 7 Tool adjust screws    | 1 | No. 10 Rocker shoe |

### OFFSET TOOL HOLDER



May be used for either right or left hand operations as:

- Carbide Backrest for Turret
- Roller Backrest for Turret
- Knee Tool
- Drill and Chamfer Tool
- Drill and Turn Tool
- Center and Face Tool

When used in conjunction with standard Somma R & L turning tool attachments as shown below.



With Roller Backrest\*



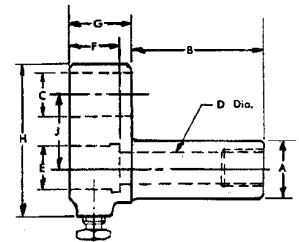
With Carbide Backrest\*



With Angular Cutter Holder\*



With Straight Cutter Holder\*



TOOL NO.	OTH00	OTH1	OTH2
A	5/8	3/4	1"
B	1-1/2	2"	2"
C	1/2	3/4	1"
D	3/8	1/2	11/16
E	1/2	5/8	1"
F	9/16	3/4	7/8
G	11/16	7/8	1-1/8
H	1-11/16	2-3/16	3"
J	13/16	1"	1-5/16

### COMPLETE STRAIGHT CUTTER HOLDERS



SHANK DIA	FITS	CAT. NO.
1/2"	00	TT00-SCH
3/4"	1	TT1-SCH
1"	2	TT2-SCH

Complete straight cutter holder consists of the following assembly of parts as listed on page 82.

- |   |                               |   |                                       |
|---|-------------------------------|---|---------------------------------------|
| 1 | No. 11 Straight cutter holder | 1 | No. 13 Set Screw for straight holder  |
| 1 | No. 8 Cutting tool            | 1 | No. 14 Binder pin for straight holder |