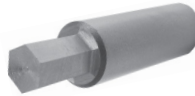


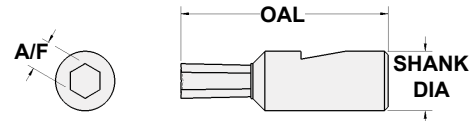
### INTERNAL HEX FOR SWISS HOLDERS

INCH / Hex, for ORBSWS/...Holders			
8MM (.315) Shank Diameter x 28MM (1.103) OAL			
Nominal Hex Size	Actual A/F*	Max Cutting Depth*	Part Number
.050	.0505	.107	HXSW-050-F
1/16	.0630	.133	HXSW-1/16-F
5/64	.0786	.166	HXSW-5/64-F
3/32	.0947	.199	HXSW-3/32-F
7/64	.1106	.233	HXSW-7/64-F
1/8	.1265	.266	HXSW-1/8-F
9/64	.1421	.299	HXSW-9/64-F
5/32	.1582	.333	HXSW-5/32-F
3/16	.1895	.398	HXSW-3/16-F
7/32	.2212	.427	HXSW-7/32-F
1/4	.2525	.443	HXSW-1/4-F
9/32	.2837	.458	HXSW-9/32-F
5/16	.3152	.473	HXSW-5/16-F
11/32	.3467	.572	HXSW-11/32-F
3/8	.3782		HXSW-3/8-F

\* Superior, Hardened **FORTE** material  
 \* Precision ground  
 \* Angular clamping flat prevents pull out



METRIC / Hex, for ORBSWS/...Holders			
8MM (.315) Shank Diameter x 28MM (1.103) OAL			
Nominal Hex Size	Actual A/F*	Max Cutting Depth*	Part Number
1.5MM	.0603	.127	HXSW-1.5-F
2.0MM	.0800	.169	HXSW-2.0-F
2.5MM	.1002	.211	HXSW-2.5-F
3.0MM	.1204	.253	HXSW-3.0-F
4.0MM	.1602	.337	HXSW-4.0-F
5.0MM	.1997	.420	HXSW-5.0-F
6.0MM	.2395	.436	HXSW-6.0-F
7.0MM	.2789	.456	HXSW-7.0-F
8.0MM	.3187	.475	HXSW-8.0-F
9.0MM	.3583	.572	HXSW-9.0-F
10.0MM	.3979		HXSW-10.0-F



### INTERNAL SQUARE FOR SWISS HOLDERS

INCH / Square, for ORBSWS/...Holders			
8MM (.315) Shank Diameter x 28MM (1.103) OAL			
Nominal Square Size	Actual A/F*	Max Cutting Depth*	Part Number
1/16	.0630	.133	SQSW-1/16-F
5/64	.0786	.166	SQSW-5/64-F
3/32	.0947	.199	SQSW-3/32-F
7/64	.1106	.233	SQSW-7/64-F
1/8	.1265	.266	SQSW-1/8-F
9/64	.1421	.299	SQSW-9/64-F
5/32	.1582	.333	SQSW-5/32-F
11/64	.1739	.366	SQSW-11/64-F
3/16	.1895	.398	SQSW-3/16-F
7/32	.2209	.427	SQSW-7/32-F
1/4	.2522	.443	SQSW-1/4-F
9/32	.2837	.458	SQSW-9/32-F
5/16	.3152	.473	SQSW-5/16-F



METRIC / Square, for ORBSWS/...Holders			
8MM (.315) Shank Diameter x 28MM (1.103) OAL			
Nominal Square Size	Actual A/F*	Max Cutting Depth*	Part Number
1.5MM	.0603	.127	SQSW-1.5-F
2.0MM	.0800	.169	SQSW-2.0-F
2.5MM	.1002	.211	SQSW-2.5-F
3.0MM	.1204	.253	SQSW-3.0-F
4.0MM	.1602	.337	SQSW-4.0-F
5.0MM	.1997	.420	SQSW-5.0-F
6.0MM	.2392	.436	SQSW-6.0-F
7.0MM	.2789	.456	SQSW-7.0-F
8.0MM	.3187	.475	SQSW-8.0-F

Hexagon go / no-go gages (with handle) are available upon request. See page 16 for Broach Centering Gages.

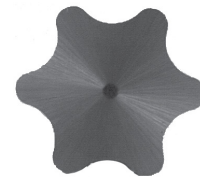
\* Custom A/F & Depths of Cut available to quote upon request

### INTERNAL 6 LOBED BROACHES FOR SWISS HOLDERS



\* Superior, Hardened **FORTE** material  
 \* Precision ground  
 \* Angular clamping flat prevents pull out

6 Lobed for ORBSWS...Holders		
8MM Shank Diameter x 28MM		
Nominal 6-Lobe Size	Max Cutting Depth*	Part Number
T5	.047	TOSW-T5
T6		TOSW-T6
T7	.063	TOSW-T7
T8	.078	TOSW-T8
T9		TOSW-T9
T10		TOSW-T10
T15	.109	TOSW-T15
T20	.156	TOSW-T20
T25		TOSW-T25
T27		TOSW-T27
T30	.219	TOSW-T30



\* Custom depths of cut available to quote upon request

Available in T15PM H.S.S.  
 (Prices on application)